



538 NINTH STREET SUITE 240 • OAKLAND, CALIFORNIA 94607 • T 510 625 9800 • F 510 625 9801 • WWW.HKIT.COM • A CALIFORNIA CORPORATION

ADDENDUM 1

DATE: April 18, 2024

PROJECT: OUSD, Wagner Ranch Elementary School Path of Travel Work

FROM: HKIT Architects

TO: Prospective Bidders

Cc: Swinerton

This Addendum forms a part of the Contract Documents and modifies the original Procurement Documents and previous Addenda as described below. This document includes requirements that clarify or supersede portions of the Wagner Ranch ES Path of Travel Bid. Acknowledge receipt of this Addendum in the space provided on the Bid Form. Failure to do so may subject Bidder to disqualification.

DSA File Number: 07-33 **DSA Application Number:** 01-120557

Signature of Design Professional: _____ 

Printed Name: Jeff Evans

Professional License: *Check One* Architect Structural Engineer

License Number: C32430

Expiration Date: 10/31/25

Bid RFIs

1. Can you clarify what is being done with the drinking fountain. When I attended the initial job walk, I seen a fountain on the exterior of the building, the plans show it is on the interior. Is it being replaced is there an existing fountain in its place?

ANSWER: The drinking fountain shown in Building 500 is the DSA approved location on the path of travel. It is existing to remain, no scope of work at this drinking fountain. It is shown for DSA approval of path of travel and will be reviewed by the IOR for conformity to plans.

ADDENDUM 1

CHANGES TO DRAWINGS

1-1 Subject: Locations of new concrete work at parking and drop off

Attachments: A1.01

Description of Change: Added approximate dimensions to locate new concrete work. All locations must be field verified with civil grading plans.

1-2 Subject: Truncated domes at curb ramps.

Attachments: A2.02

Description of Change: Truncated domes should be cast-in-place.

1-3 Subject: Accessibility upgrades at toilet rooms.

Attachments: A2.01, A2.03

Description of Change: Provided additional dimensions and keynotes to clarify scope and required changes to toilet rooms. Revised blocking details for accessories and grab bars at A2.03

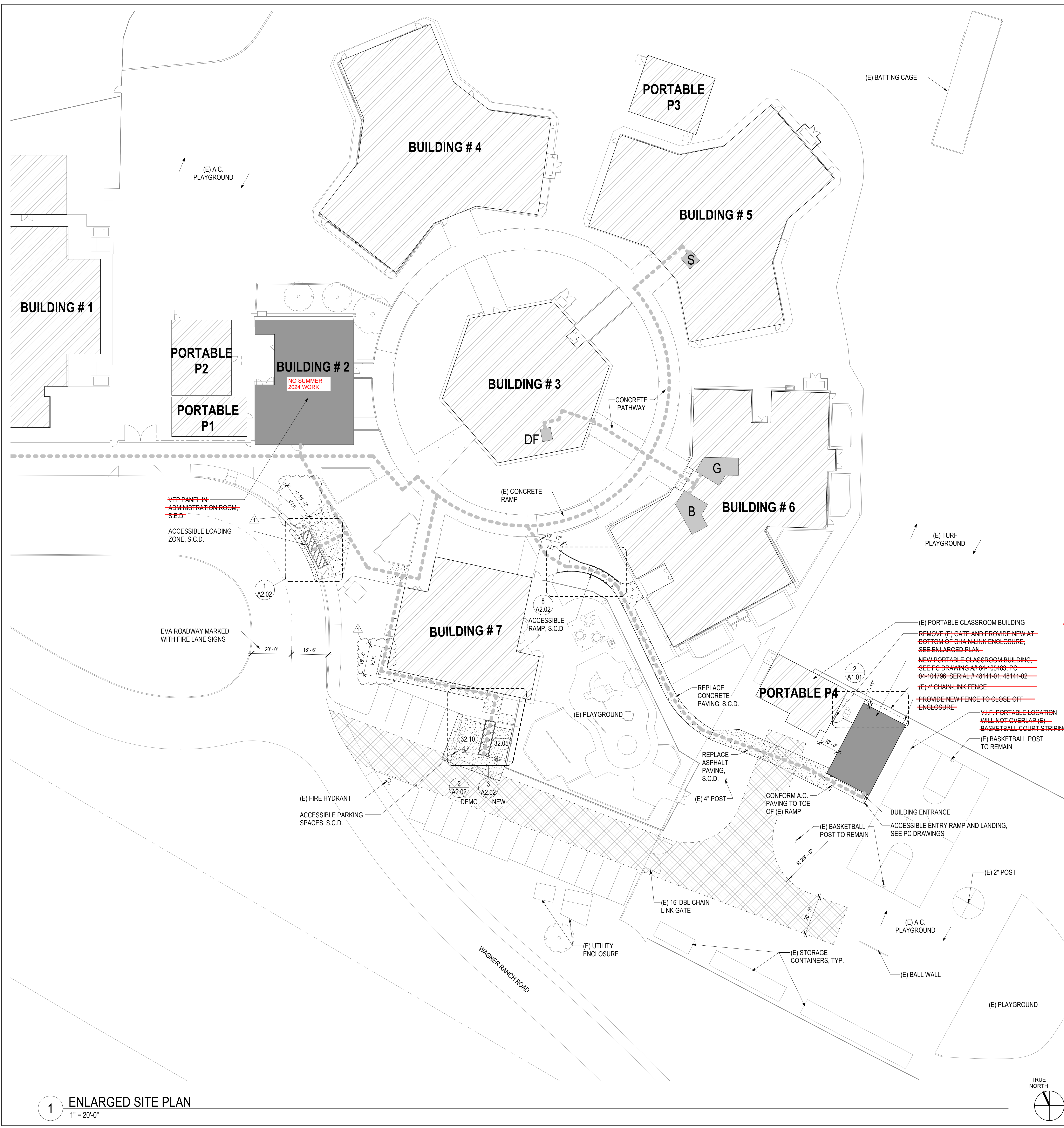
GENERAL

1-1 Engineer's Estimate is \$250,000

1-2 Add Specification Section 10 21 13 Toilet Partitions

1-3 Mandatory PreBid Site Walks # 1 and # 2 Sign in Sheets

END OF ADDENDUM



GENERAL NOTES

A. SEE CIVIL AND ELECTRICAL DRAWINGS FOR RESPECTIVE SCOPE OF REMOVAL WORK.

B. GENERAL CONTRACTOR RESPONSIBLE FOR LOCATING ALL UNDERGROUND UTILITY LINES AND COORDINATION WITH CONSTRUCTION PRIOR TO WORK.

C. PROVIDE ANY AND ALL REMOVAL WORK NECESSARY TO ALLOW FOR INSTALLATION AND/OR CONSTRUCTION OF WORK TO BE PROVIDED.

D. RESTORE, PATCH, REPAIR, REPLACE TO CONDITION PRIOR TO START OF CONSTRUCTION ANY EXISTING ITEM REMOVED OR OTHERWISE MODIFIED TO ALLOW FOR INSTALLATION OR CONSTRUCTION OF WORK TO BE PROVIDED.

E. ALL FINISHES, INCLUDING BUT NOT LIMITED TO GROUND SURFACE, DISTURBED AS A RESULT OF CONSTRUCTION OR REMOVAL WORK SHALL BE RESTORED, PATCHED, REPAIRED, REPLACED, OR RECONSTRUCTED TO CONDITION PRIOR TO START OF CONSTRUCTION. FINISHED GROUND SURFACE TO MATCH EXISTING INCLUDING BUT NOT LIMITED TO GRADES/ELEVATIONS PRIOR TO START OF CONSTRUCTION. PREP AND PAINT ALL WORK PROVIDED THAT IS NOT FACTORY FINISHED. COLOR TO BE SELECTED BY ARCHITECT FROM MANUFACTURER'S FULL RANGE OF COLORS.

F. PROVIDE ASSISTIVE LISTENING DEVICE SIGNAGE IN PORTABLE CLASSROOM AND ASSISTIVE LISTENING DEVICES AT MAIN OFFICE.

SHEET NOTES

32.05 ACCESSIBLE PARKING, S.C.D.
32.10 ACCESSIBLE VAN PARKING, S.C.D.

SITE PLAN LEGEND

- AREA OF SCOPE OF WORK
- NO WORK THIS BUILDING
- 20'-0" WIDE EMERGENCY VEHICLE ACCESS ROUTE
- INDICATES ACCESSIBLE PATH OF TRAVEL IS A BARRIER FREE ACCESS ROUTE WITHOUT ANY ABRUPT LEVEL CHANGES EXCEEDING 1/2" BEVELED AT 1:2 MAX. SLOPE OR VERTICAL LEVEL CHANGES NOT EXCEEDING 1/4" MAX. AND AT LEAST 48" WIDE. SURFACE IS SLIP RESISTANT, STABLE, FIRM AND SMOOTH. CROSS SLOPE DOES NOT EXCEED 2% AND SLOPE IN THE DIRECTION OF TRAVEL IS LESS THAN 5% UNLESS OTHERWISE INDICATED. ARCHITECT TO VERIFY THAT ALL BARRIERS IN THE PATH OF TRAVEL HAVE BEEN REMOVED UNDER THIS PROJECT AND PATH OF TRAVEL COMPLIES WITH CBC 11B.
- PROPERTY LINE
- (E) FIRE HYDRANT
- ASSUMED PROPERTY LINE
- ACCESSIBLE BOY'S RESTROOM TO SERVE AREA OF WORK, SEE 3/A2.01
- ACCESSIBLE GIRL'S RESTROOM TO SERVE AREA OF WORK, SEE 2/A2.01
- ACCESSIBLE STAFF RESTROOM TO SERVE AREA OF WORK, SEE 1/A2.01
- ACCESSIBLE DRINKING FOUNTAIN TO SERVE AREA OF WORK, SEE 2/A2.03
- REPLACE CONC. PAVING, S.C.D.
- REPLACE A.C. PAVING, S.C.D.



WAGNER RANCH ELEMENTARY SCHOOL RELOCATABLE PROJECT

350 CAMINO PABLO, ORINDA, CA 94563
JOB NO. 21010.03
DRAWN -
CHECKED -
JOB CAPTAIN -

ISSUE

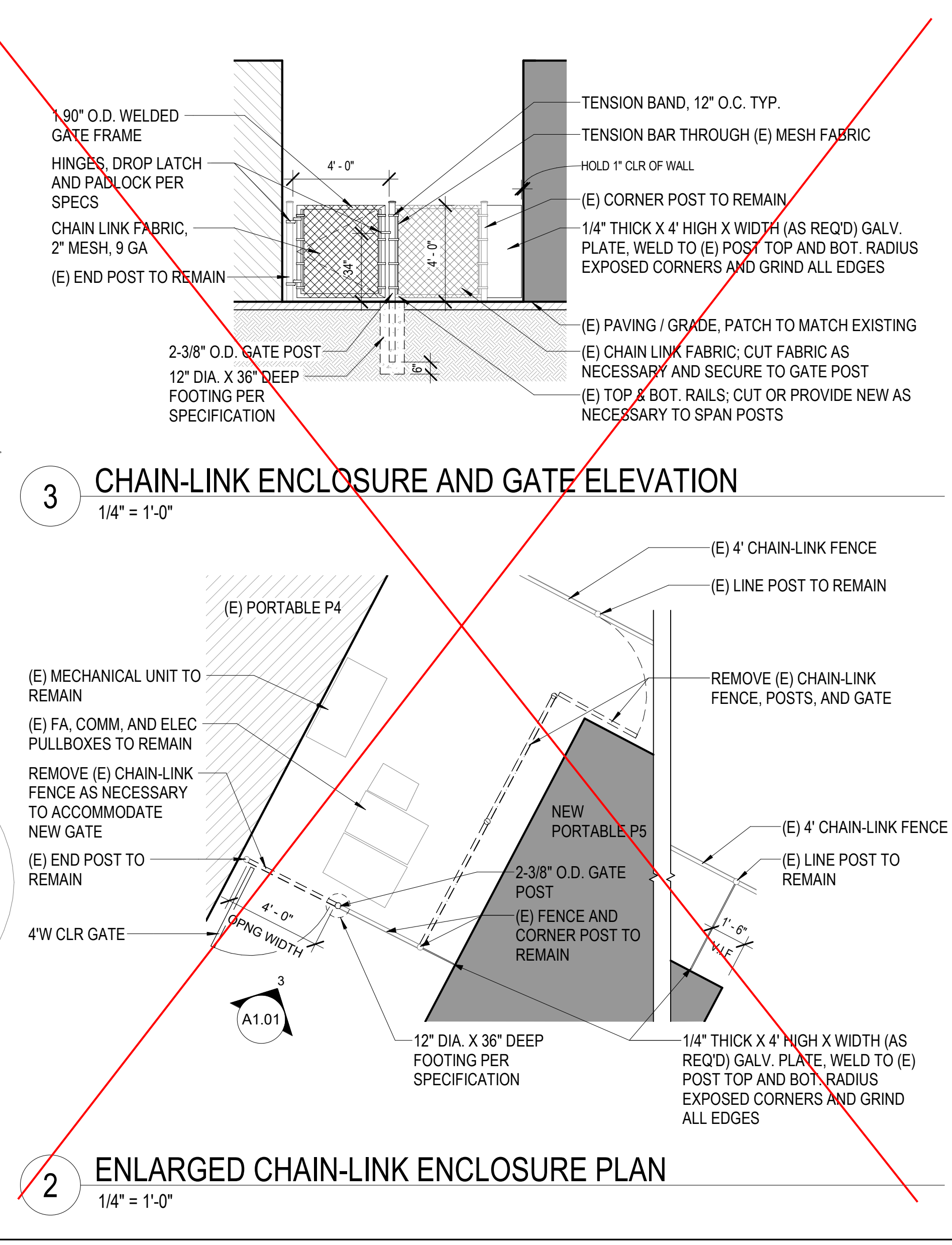
DATE	DESCRIPTION
05.04.23	DSA SUBMITTAL
05.08.23	DSA BACKCHECK
1 04.17.24	ADD 01

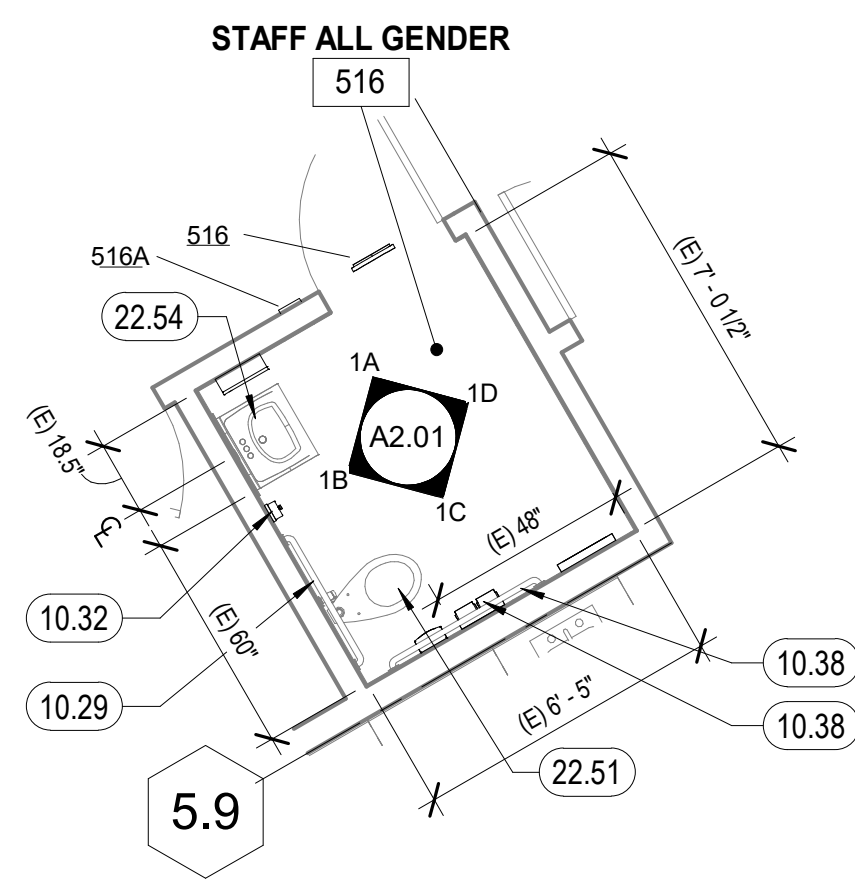
DRAWING TITLE
ENLARGED SITE PLAN

Addendum 01

SCALE As indicated

A1.01
COPYRIGHT © 2016 HKIT ARCHITECTS

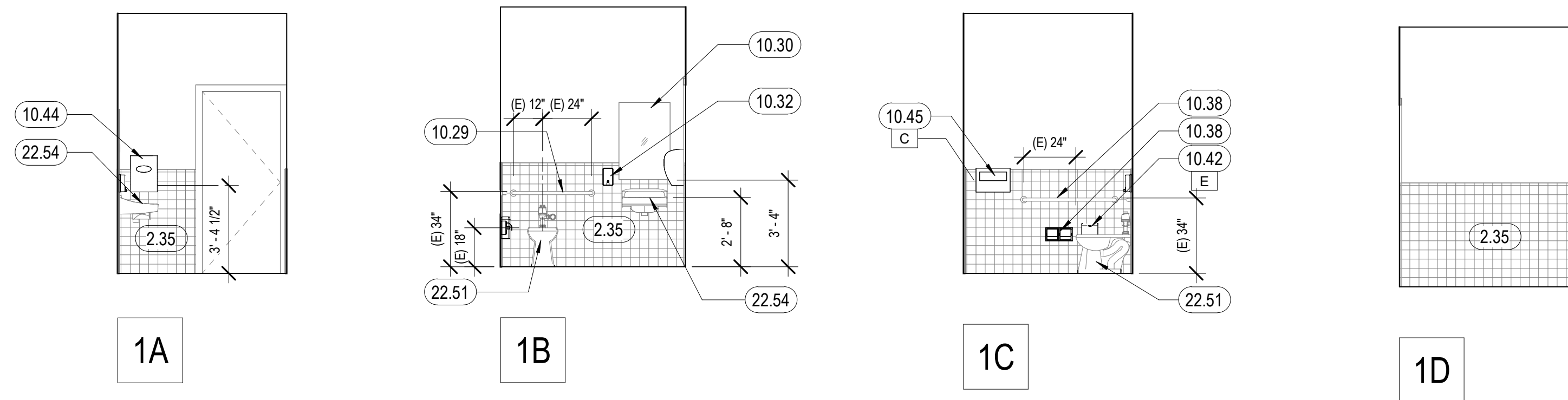




FOR DSA APPROVAL
 THIS DRAWING REPRESENTS EXISTING CONDITIONS FOR DSA APPROVAL. NO WORK UNLESS NOTED AS NEW.

1 516 STAFF ALL GENDER RESTROOM - (E) PLAN
 1/4" = 1'-0"

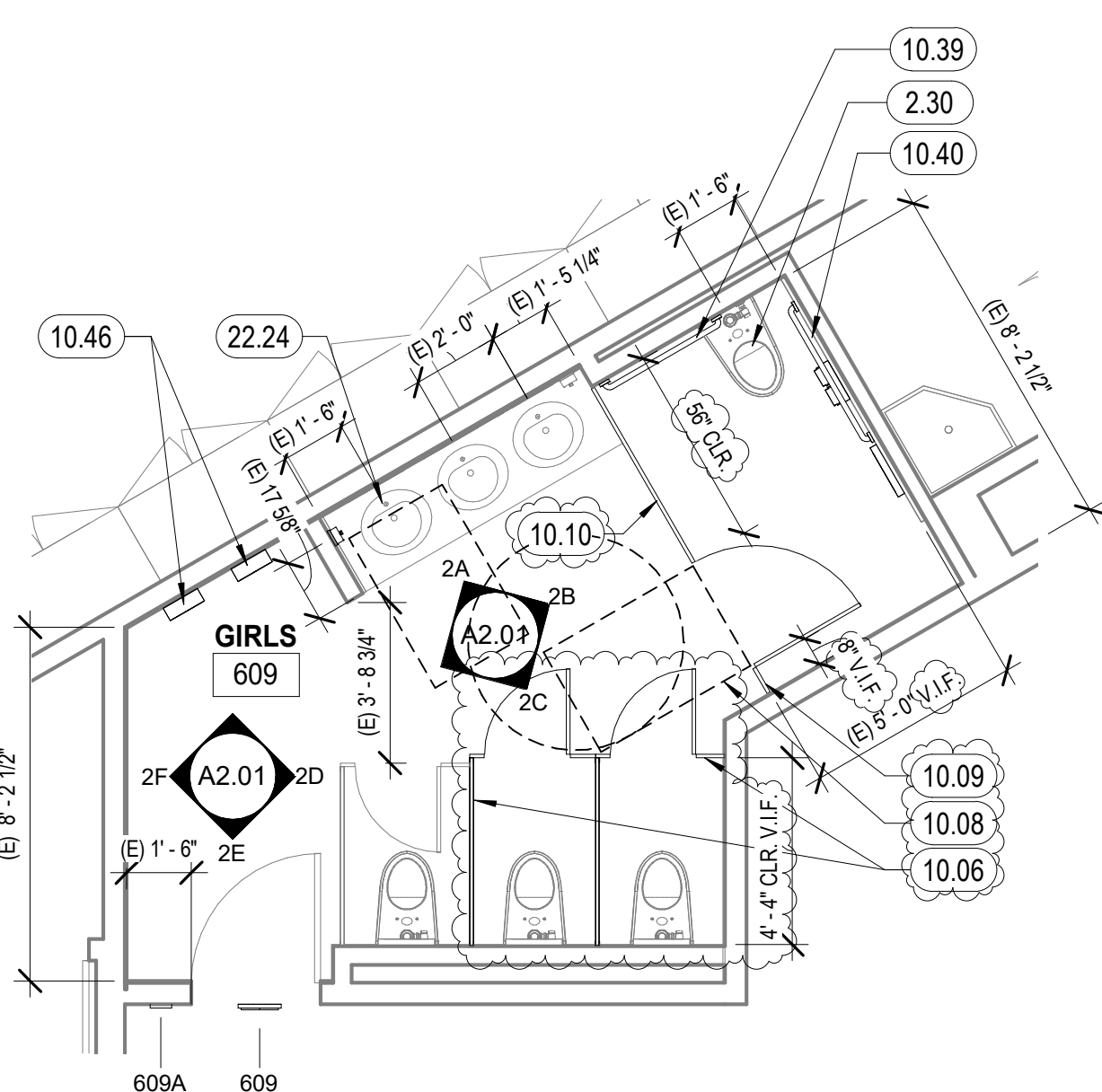
DSA APP# 01-102445



516 STAFF ALL GENDER RESTROOM - (E) INTERIOR ELEVATIONS
 1/4" = 1'-0"

NOTE: PATCH AND PAINT (E) GYP. BD. WALLS AS NECESSARY FOLLOWING POSSIBLE RELOCATION OF ACCESSORIES; V.I.F.

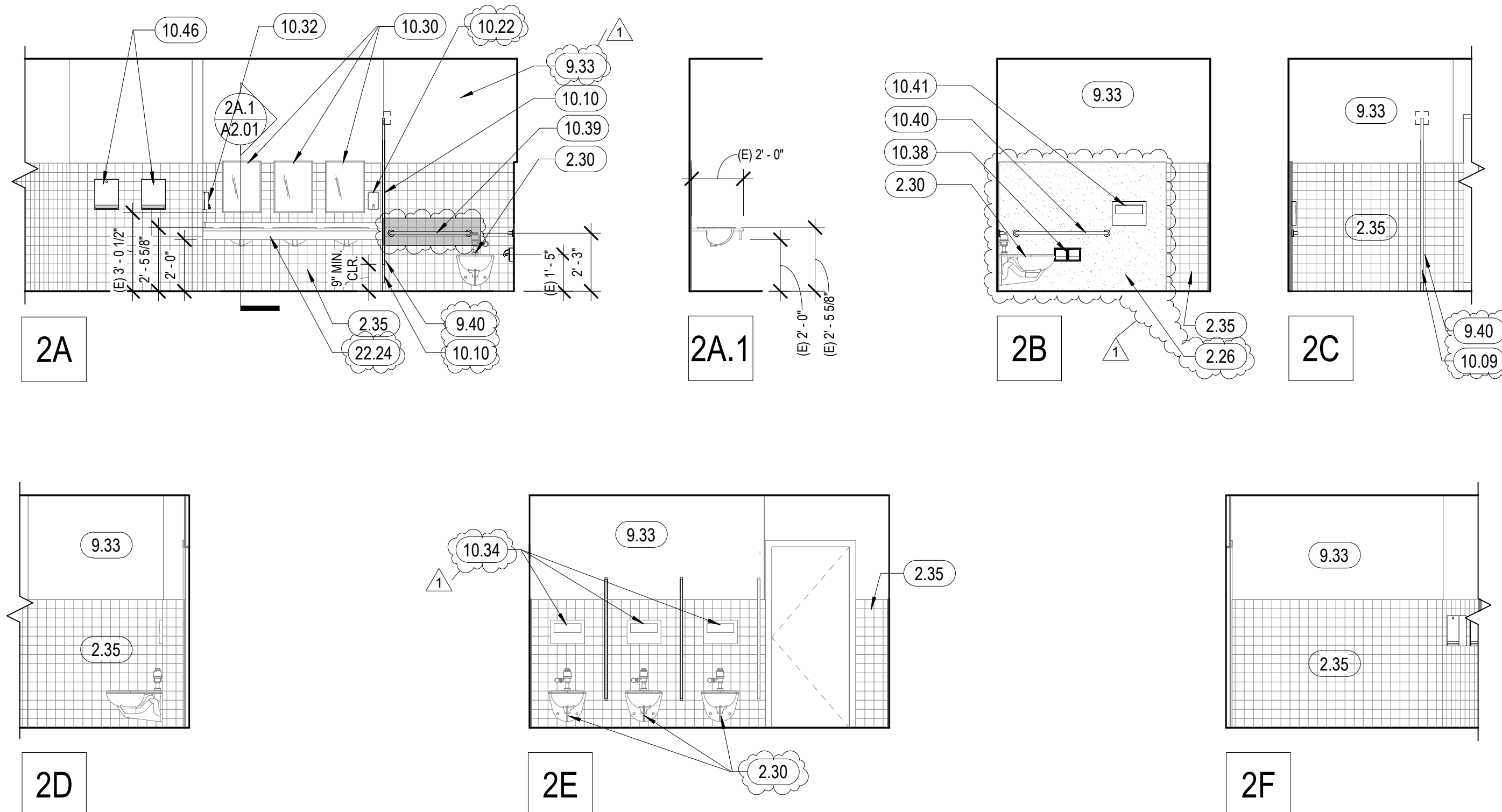
USE ADULT AGE GROUP FOR FIXTURE AND ACCESSORY DIMENSIONS. SEE SHEET A2.03



FOR DSA APPROVAL
 THIS DRAWING REPRESENTS EXISTING CONDITIONS FOR DSA APPROVAL. NO WORK UNLESS NOTED AS NEW.

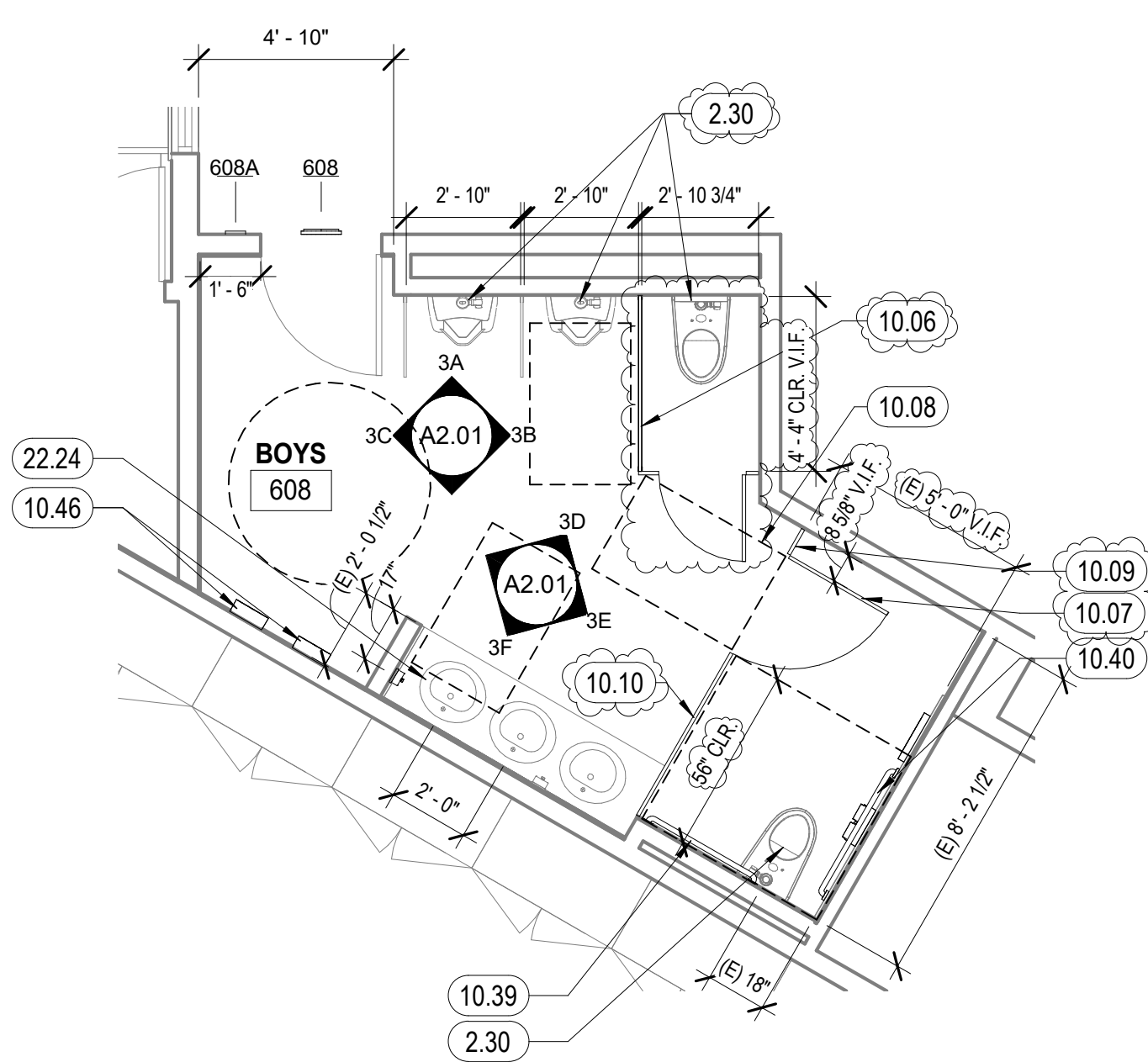
2 609 GIRLS - EXISTING PLAN
 1/4" = 1'-0"

DSA APP# 64618



609 GIRLS - EXISTING INTERIOR ELEVATIONS
 1/4" = 1'-0"

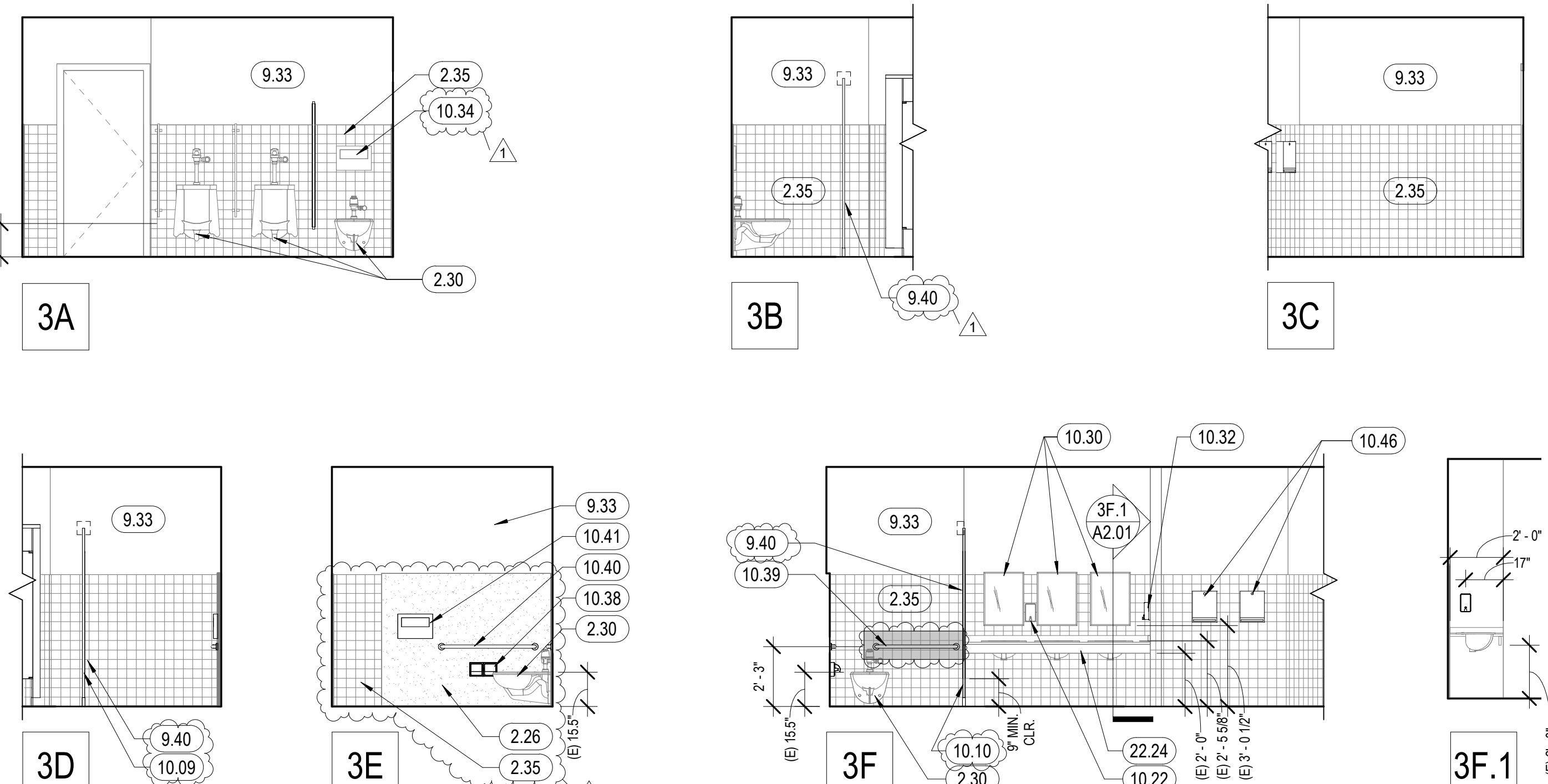
USE AGE GROUP 9-12 FOR FIXTURE AND ACCESSORY DIMENSIONS. SEE SHEET A2.03



FOR DSA APPROVAL
 THIS DRAWING REPRESENTS EXISTING CONDITIONS FOR DSA APPROVAL. NO WORK UNLESS NOTED AS NEW.

3 608 BOYS - EXISTING PLAN
 1/4" = 1'-0"

DSA APP# 64618



608 BOYS - INTERIOR ELEVATIONS
 1/4" = 1'-0"

USE AGE GROUP 9-12 FOR FIXTURE AND ACCESSORY DIMENSIONS. SEE SHEET A2.03

GENERAL NOTES

- A. ALL WORK TO BE COMPLETED TO INDUSTRY STANDARDS TO ENTIRETY.
- B. SEE STRUCTURAL, MECHANICAL AND ELECTRICAL DRAWINGS FOR RESPECTIVE SCOPE OF WORK.
- C. PROTECT ALL EXISTING FINISHES, FIXTURES AND EQUIPMENT THAT ARE TO BE EXPOSED DURING CONSTRUCTION WORK.
- D. ALL FINISHES TO BE EXPOSED THAT ARE DISTURBED AS A RESULT OF CONSTRUCTION WORK SHALL BE RESTORED, PATCHED, RECONSTRUCTED AND/OR PAINTED TO MATCH (E) BUILDING.
- E. FOR EXISTING PLUMBING FIXTURES AND/OR TOILET ACCESSORIES NOTED TO REMAIN, SEE DETAIL 29/A9 10 AND VERIFY ACCESS REQUIREMENTS.
- F. WHERE FIXTURES ARE RELOCATED AT EXISTING TILE FINISHES, REPLACE DAMAGED TILES TO MATCH ADJACENT FINISH.
- G. SEE SIGNAGE SCHEDULE FOR RESTROOM SIGNAGE.

DIMENSIONS ON ENLARGE TOILET ROOM PLANS AND ELEVATIONS ARE FROM F.O.F. (FACE OF FINISH) TYPICAL, U.O.N.

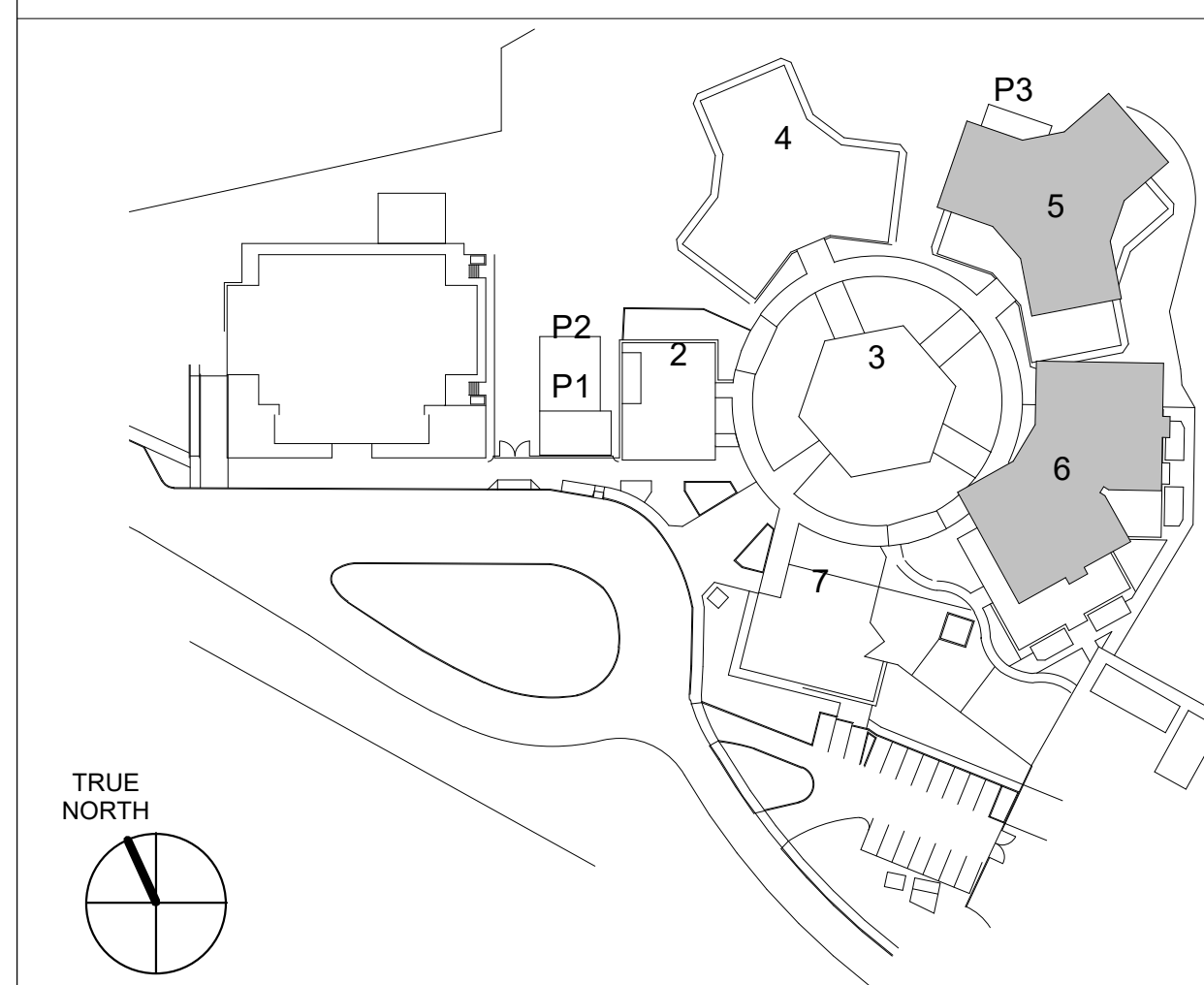
SHEET NOTES

- 2.26 (E) SOLID PARTITION PANEL ANCHORED TO WALL TO REMAIN. ATTACH ACCESSORIES DIRECTLY TO PANEL.
- 2.30 (E) PLUMBING FIXTURE TO REMAIN. SEE DETAIL 20/A2.03 FOR ACCESS REQUIREMENTS
- 2.35 (E) TILE WAINSCOT TO REMAIN, PATCH / REPLACE DAMAGED / REMOVED TILES TO MATCH (E)
- 9.33 PATCH AS NECESSARY AND PAINT (E) INTERIOR WALL, CEILING AND TRIM TO LIKE NEW CONDITIONS. SEE INTERIOR FINISH SCHEDULE
- 9.40 REMOVE AND REPLACE (E) TILE WITH HOLES OR DAMAGE. MATCH EXISTING.
- 10.06 REMOVE DOOR AND PILASTERS AT FRONT OF STANDARD STALL. CUT BACK SIDE PARTITION PANEL. REINSTALL PILASTERS AND DOOR. DOOR TO SWING OUT.
- 10.07 VERIFY DOOR SIZE 34" WIDE
- 10.08 CONFIRM 48"x32" MANEUVERING CLEARANCE AT NEW DOOR LOCATION
- 10.09 PROVIDE PILASTER AT HINGE SIDE OF DOOR
- 10.10 REMOVE AND SALVAGE (E) ACCESSIBLE PARTITION. CUT BACK PARTITION PANEL TO PROVIDE MIN. REQUIRED CLEARANCE. REINSTALL PARTITION AT SAME LOCATION FROM SIDE WALL.
- 10.22 (E) SOAP DISPENSER TO REMAIN
- 10.29 (E) 36" GRAB BAR TO REMAIN
- 10.30 (E) MIRROR TO REMAIN
- 10.32 (E) SOAP DISPENSER, ADJUST HEIGHT ABOVE FINISH FLOOR PER 18&25/A2.03
- 10.34 (E) SEAT COVER DISPENSER TO REMAIN
- 10.38 (E) TOILET PAPER DISPENSER, ADJUST HEIGHT AND POSITION PER 20&25/2.03
- 10.39 REMOVE AND REINSTALL (E) 36" GRAB BAR TO OPEN SIDE OF FLUSH VALVE FOR 9-12 AGE GROUP PER 25/A2.03; PROVIDE WALL BLOCKING PER 12/A2.03 (CBC 11B-604.5.2 EXCEPTION 2). REMOVE AND REPLACE (E) TILE TO ACCOMMODATE NEW WORK.
- 10.40 REMOVE AND REINSTALL (E) 42" GRAB BAR TO 9-12 AGE GROUP HEIGHT PER 25/A2.03.
- 10.41 (E) SEAT COVER DISPENSER; ADJUST HEIGHT OF OPENING TO 40" A.F.F.; SEE 18&25/A2.03
- 10.42 PROVIDE SANITARY NAPKIN RECEPTACLE; SEE 20&25/A2.03
- 10.44 (E) PAPER TOWEL DISPENSER; ADJUST HEIGHT PER 25/A2.03
- 10.45 PROVIDE SEAT COVER DISPENSER; SEE 18&25/A2.03
- 10.46 PROVIDE 4" MAX. PROJECTION SURFACE MOUNTED PAPER TOWEL DISPENSER. SEE 18&25/A2.03 FOR MOUNTING HEIGHT; ATTACH TO (E) BLOCKING PER 16/A2.03
- 22.24 (E) LAVATORIES AND COUNTERTOP TO REMAIN
- 22.51 (E) FLOOR MOUNTED WATER CLOSET TO REMAIN
- 22.54 (E) ACCESSIBLE WALL HUNG LAVATORY TO REMAIN; SEE 19/A2.03 FOR (E) KNEE CLEARANCE

RESTROOM ACCESSORY SCHEDULE

MARK	DESCRIPTION	MANUFACTURER	MODEL	COMMENTS
A	36" GRAB BAR	BOBRICK	B-6806-36	
B	42" GRAB BAR	BOBRICK	B-6806-42	
C	SURFACE MOUNTED SEAT COVER DISPENSER	BOBRICK	B-221	
D1	SURFACE MOUNTED MULTI-ROLL TOILET TISSUE DISPENSER	BOBRICK	B-2888	AT ACCESSIBLE COMPARTMENTS
D2	SURFACE MOUNTED TOILET TISSUE DISPENSER	BOBRICK	B-6999	
E	SANITARY NAPKIN DISPOSAL	BOBRICK	B-270	
F1	24" x 36" MIRROR WITH SHELF	BOBRICK	B-166	
F2	24"W X 36"H MIRROR	BOBRICK	B-1556	
G	SURFACE MOUNTED SOAP DISPENSER	BOBRICK	B-2111	
H	SURFACE MOUNTED PAPER TOWEL DISPENSER	BOBRICK	B-2860	

KEY PLAN



WAGNER RANCH ELEMENTARY SCHOOL RELOCATABLE PROJECT

350 CAMINO PABLO, ORINDA, CA 94563
 JOB NO. 21010.03
 DRAWN -
 CHECKED -
 JOB CAPTAIN -

ISSUE

DATE	DESCRIPTION
05.04.23	DSA SUBMITTAL
05.08.23	DSA BACKCHECK
1 04.17.24	ADD 01

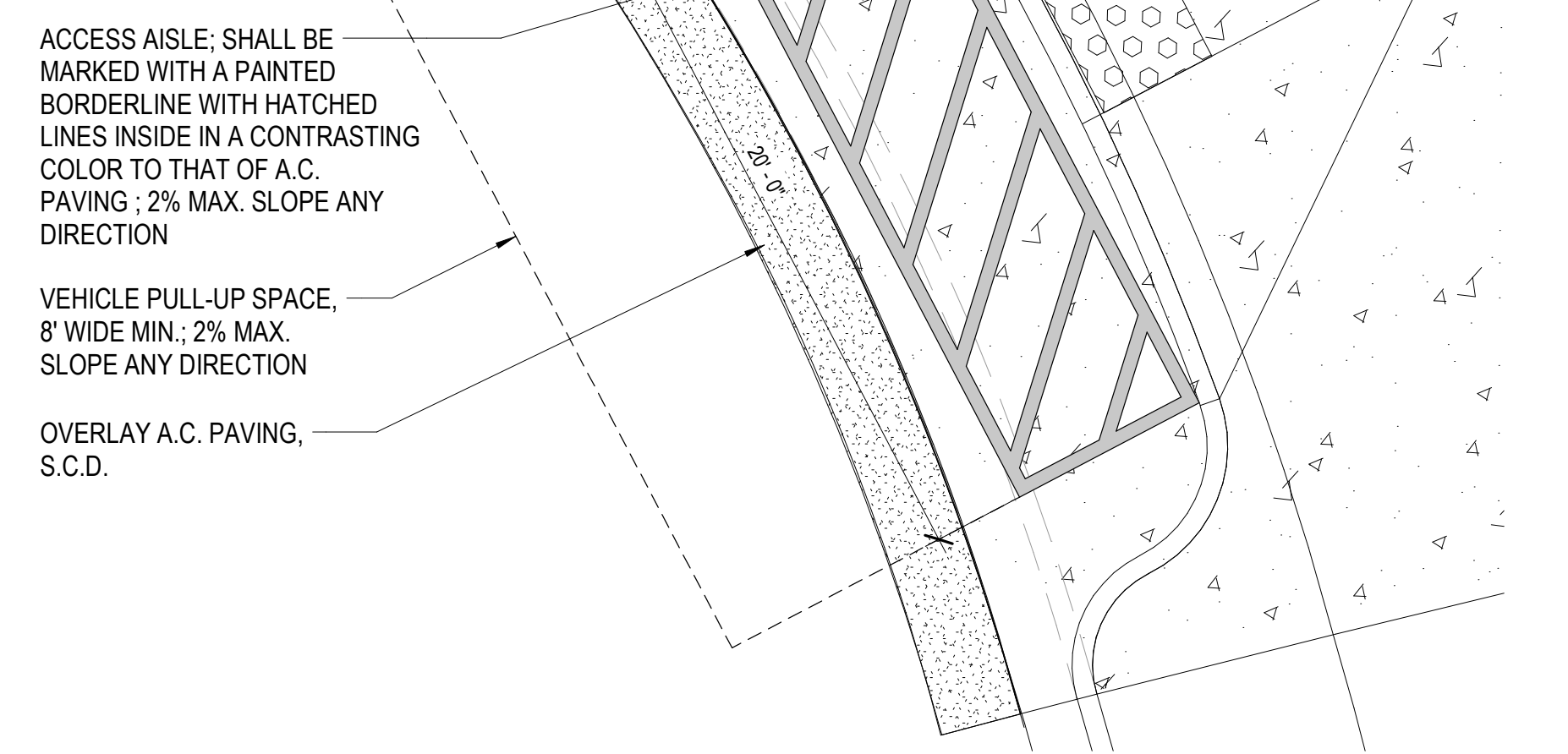
DRAWING TITLE
 ACCESSIBLE RESTROOMS - REFERENCE PLANS & INTERIOR ELEVATIONS

Addendum 01

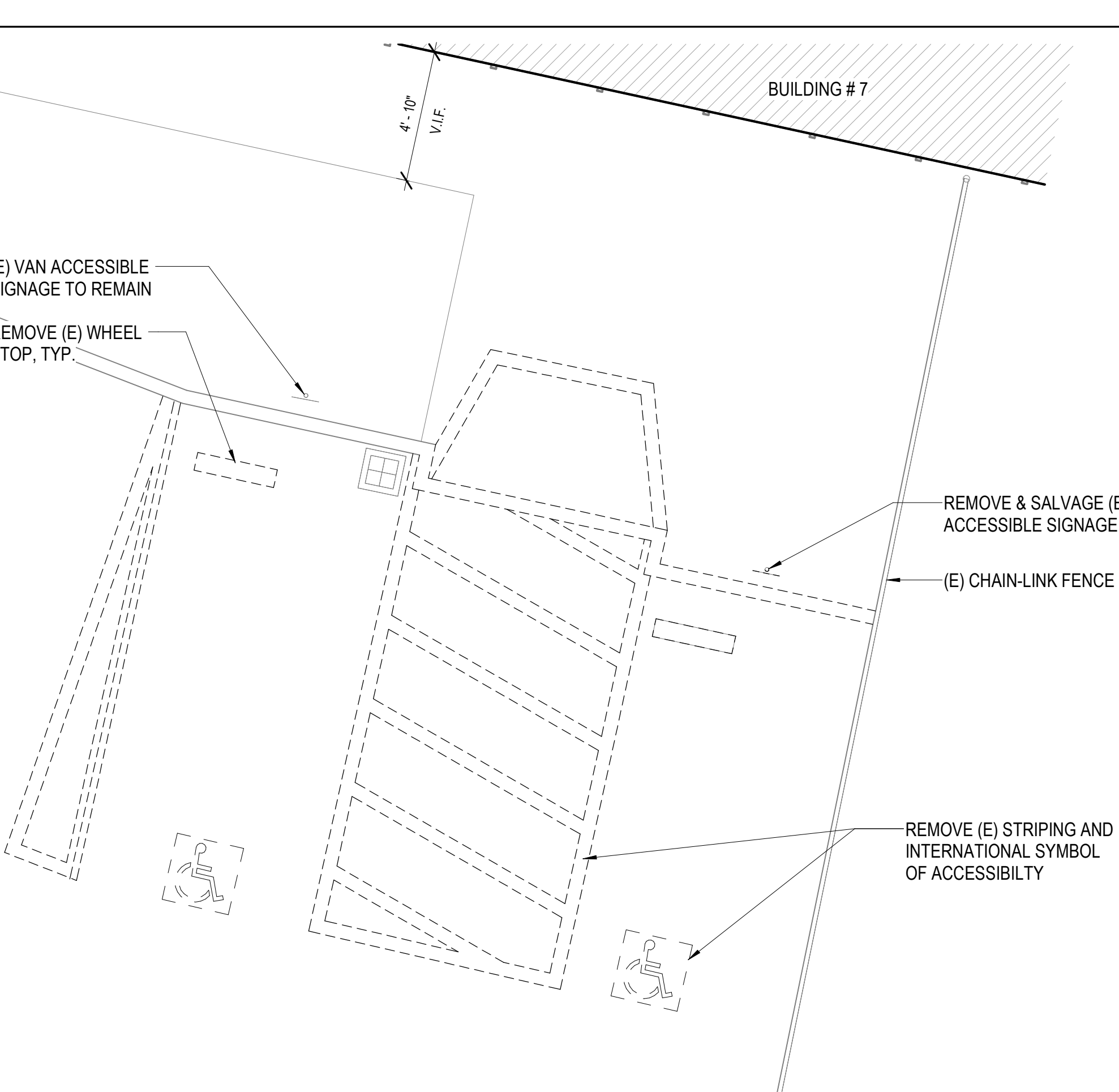
SCALE As indicated

A2.01

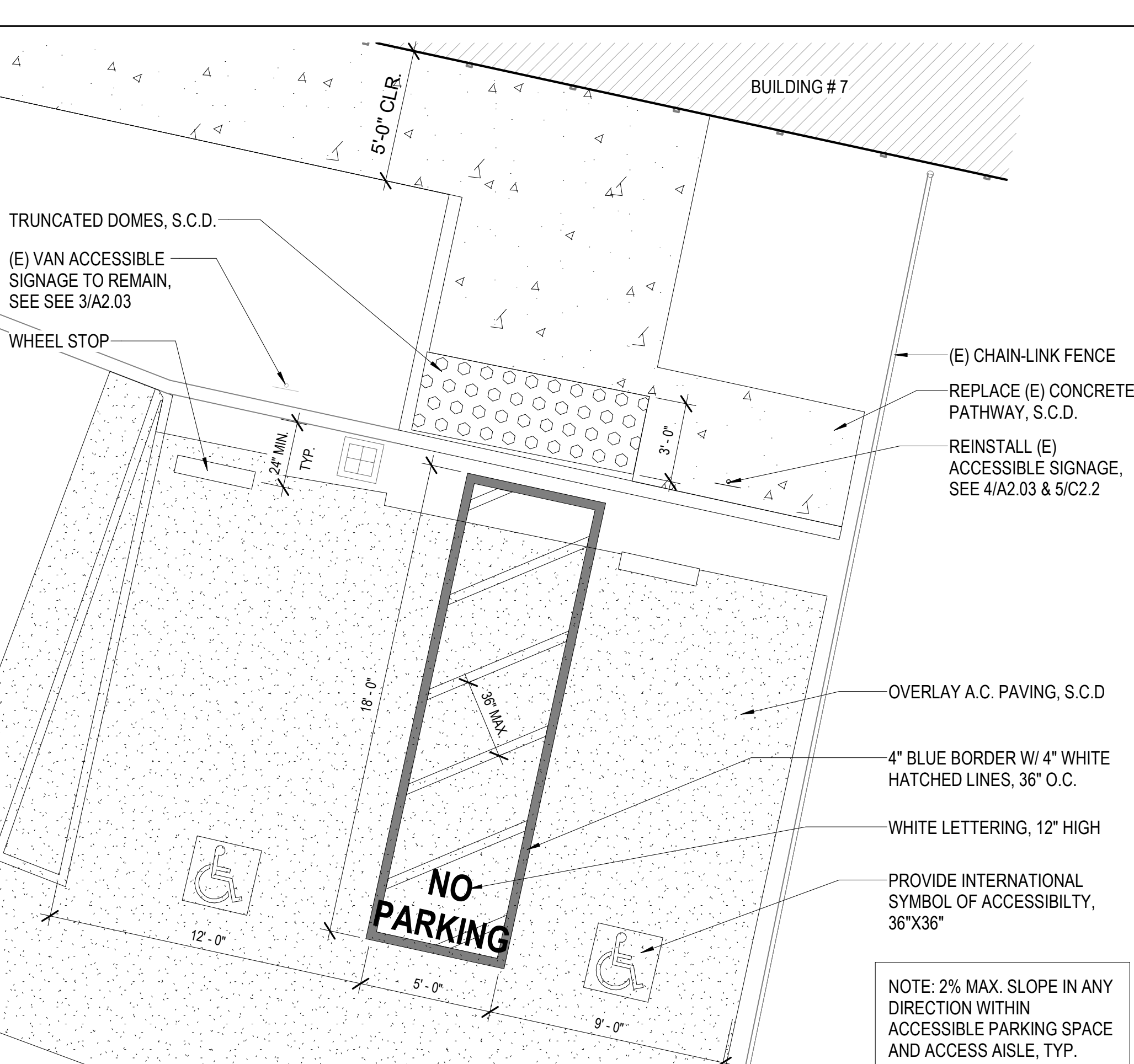
1 PASSENGER DROP-OFF AND LOADING ZONE ENLARGED PLAN
1/4" = 1'-0"



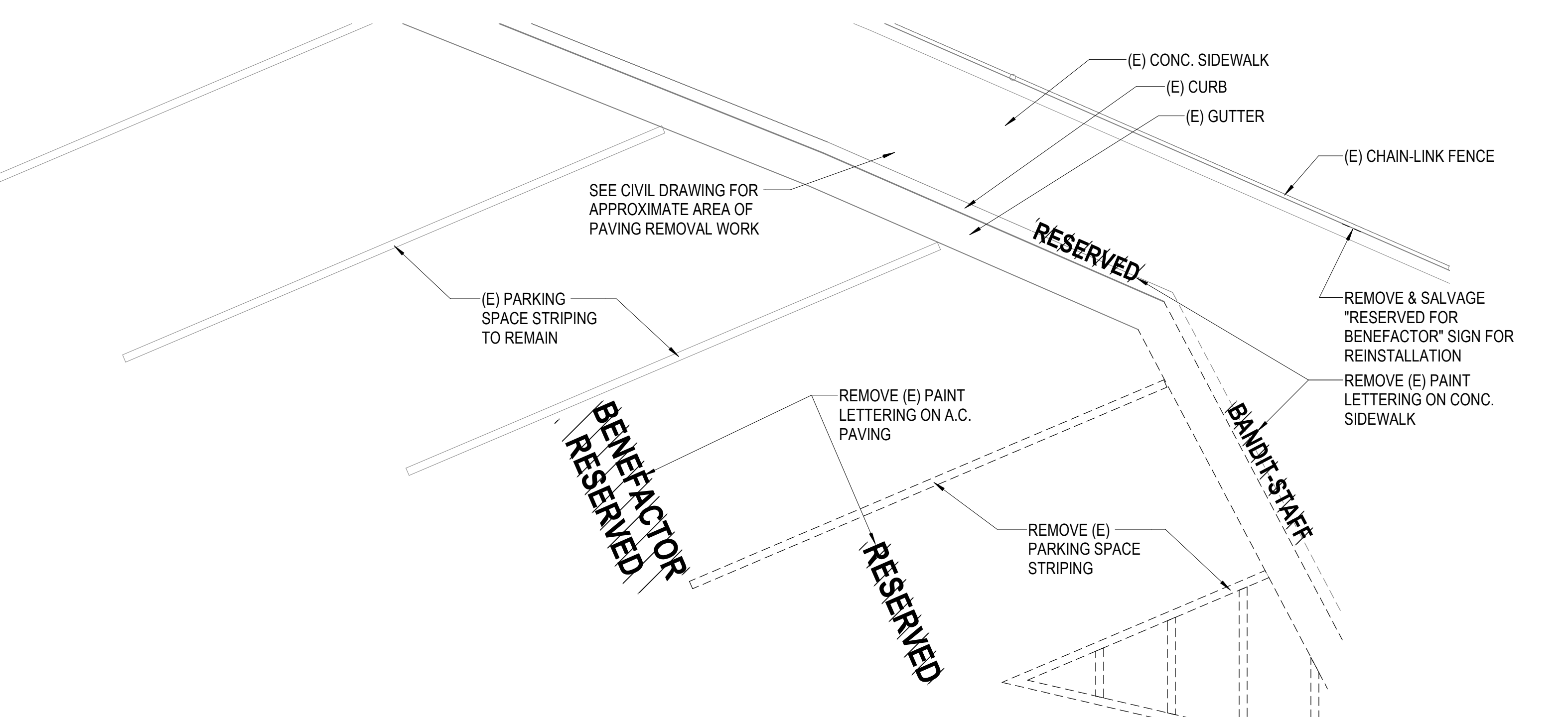
2 LOT 1 - ACCESSIBLE PARKING DEMOLITION PLAN
1/4" = 1'-0"



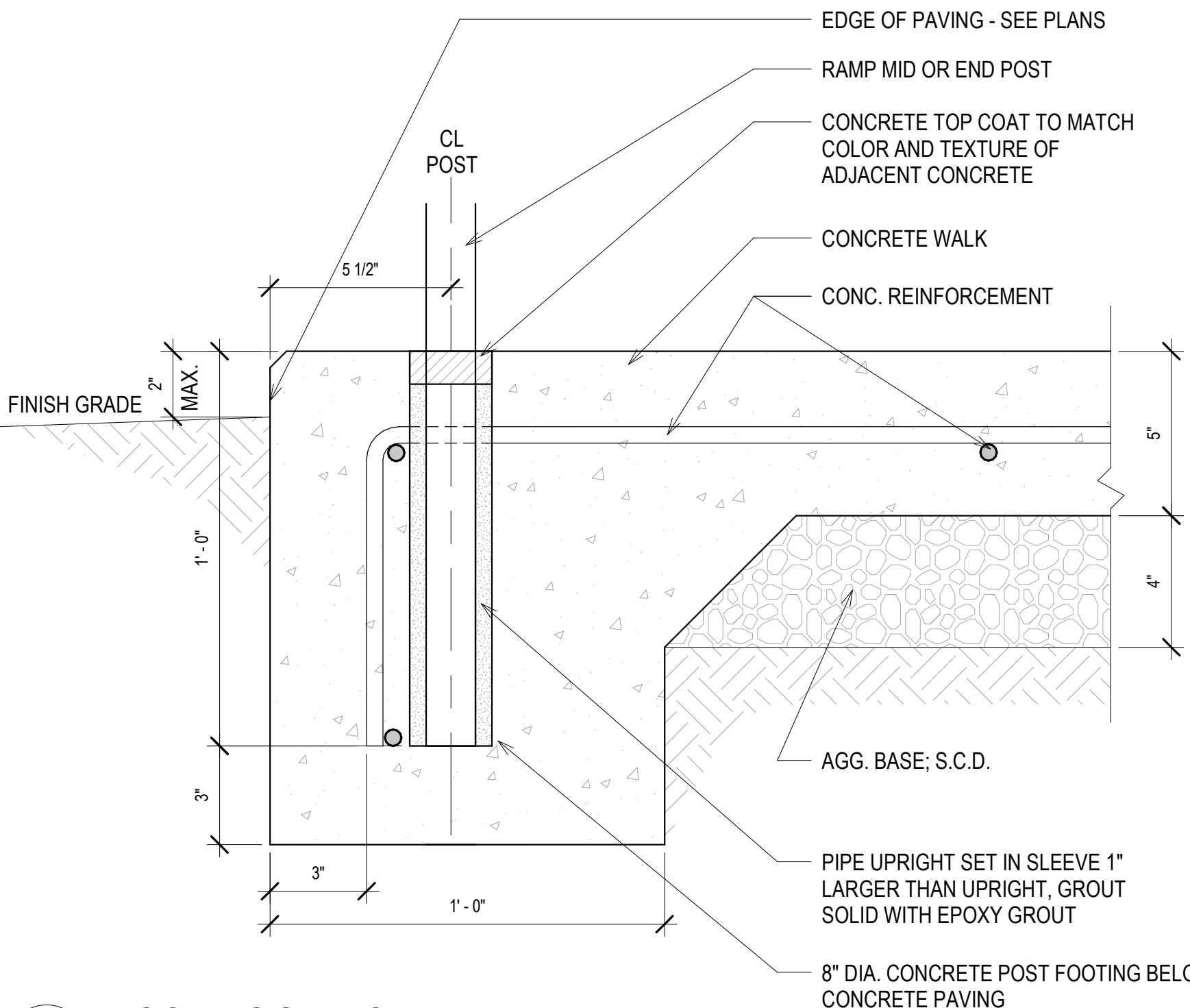
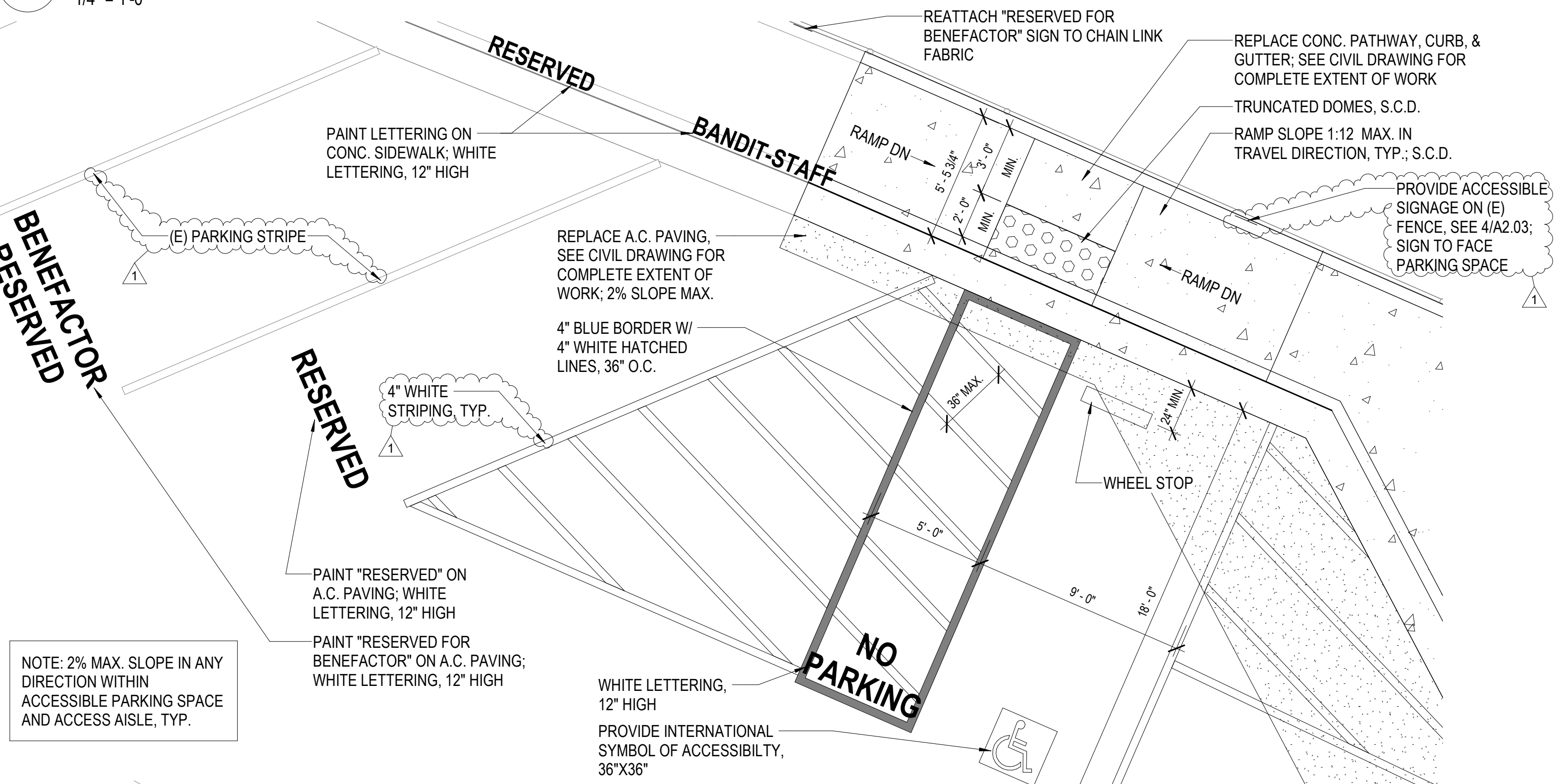
3 LOT 1 - ACCESSIBLE PARKING CONSTRUCTION PLAN
1/4" = 1'-0"



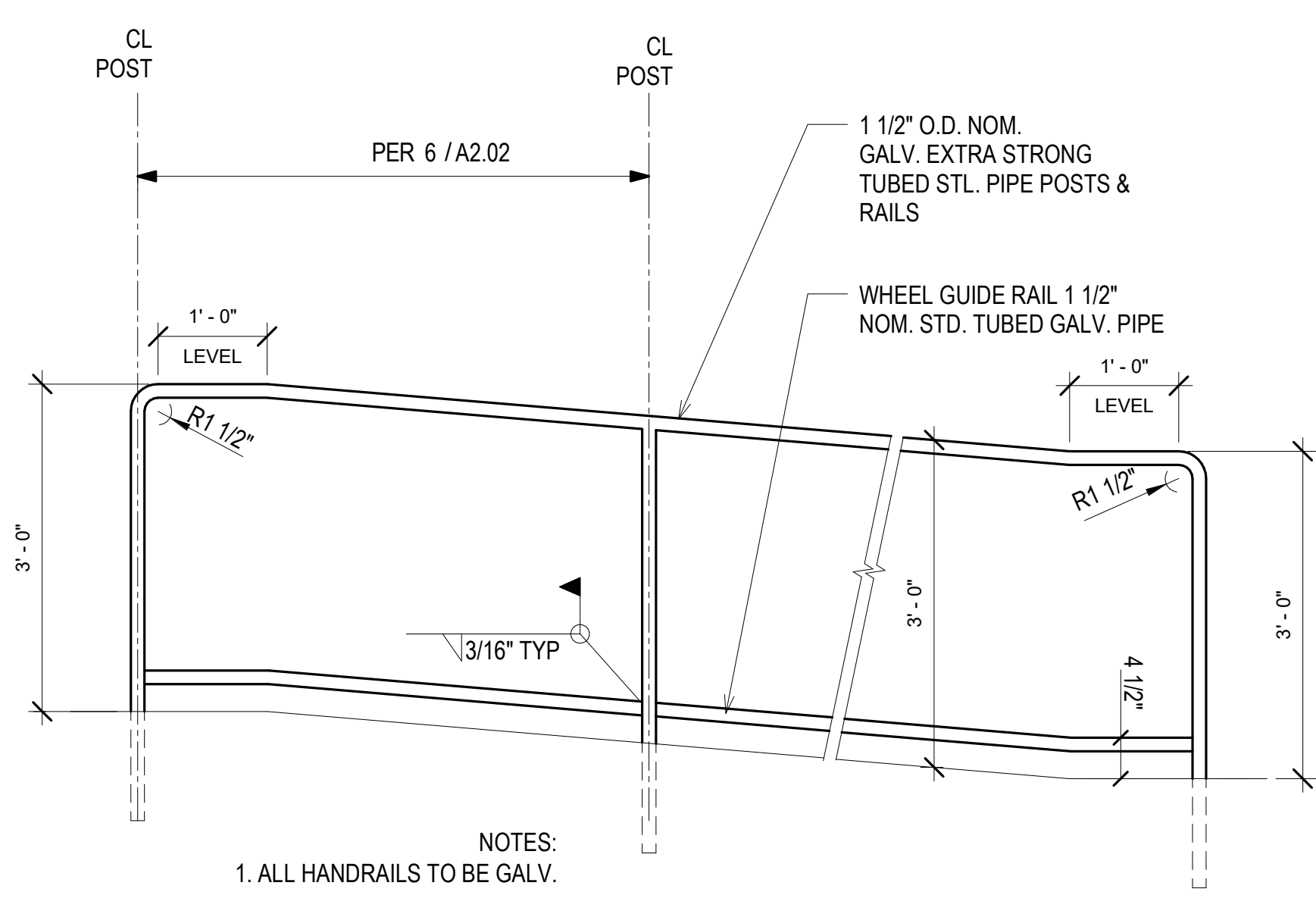
9 LOT 2 - ACCESSIBLE PARKING DEMOLITION PLAN
1/4" = 1'-0"



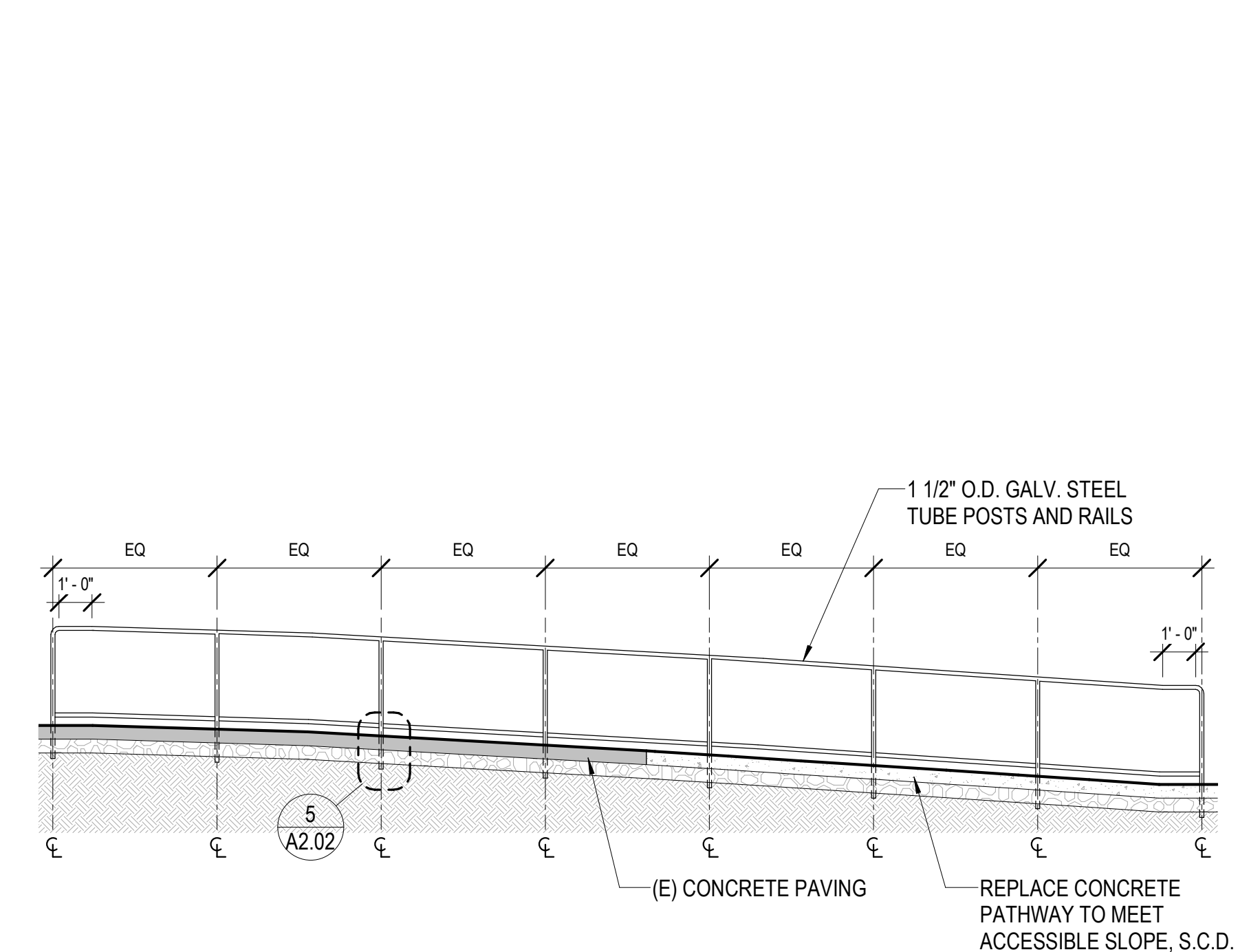
10 LOT 2 - ACCESSIBLE PARKING CONSTRUCTION PLAN
1/4" = 1'-0"



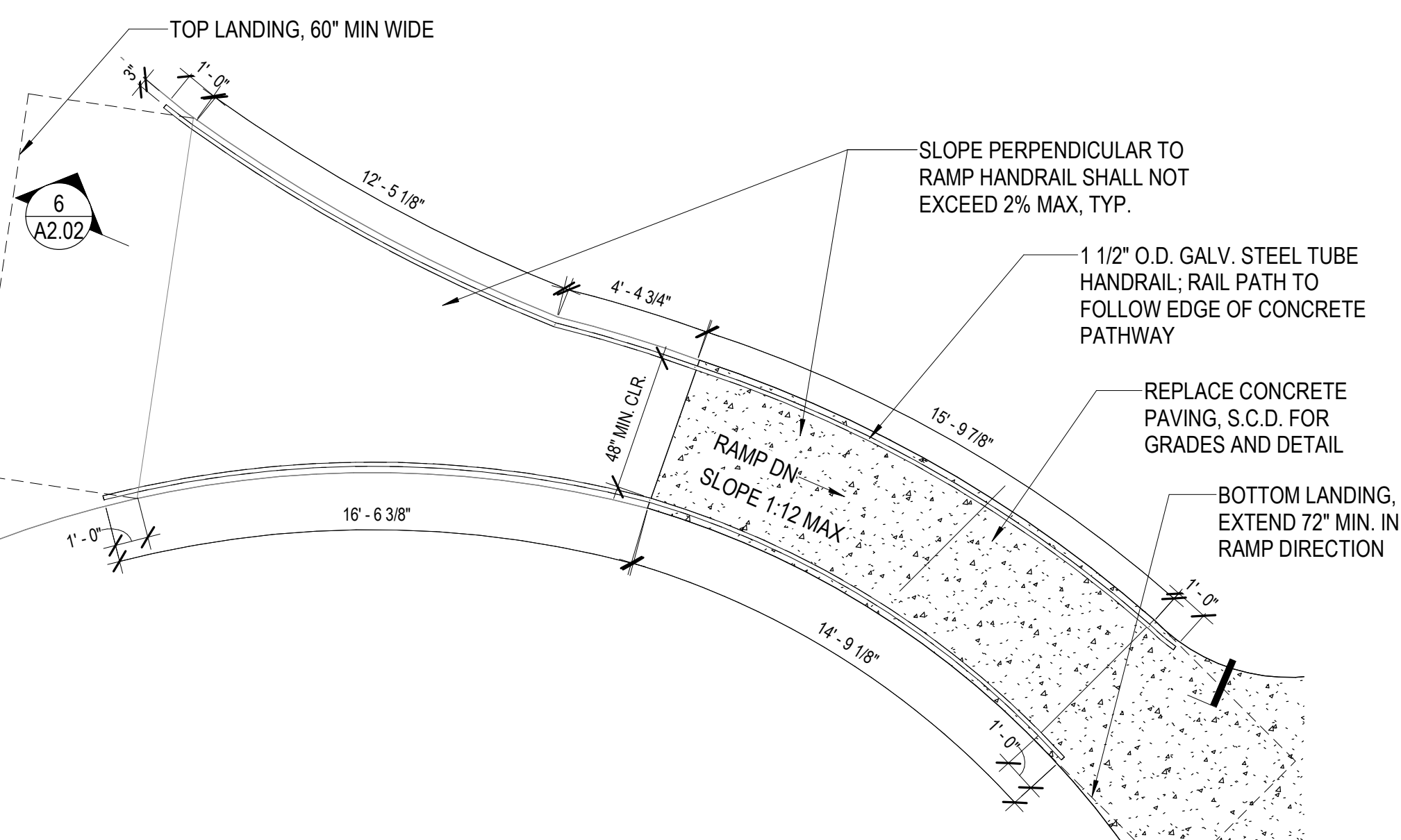
5 POST FOOTING
3" = 1'-0"



7 HANDRAIL AT RAMP
3/4" = 1'-0"



6 NEW RAMP SECTION
1/4" = 1'-0"



8 NEW RAMP ENLARGED PLAN
1/4" = 1'-0"



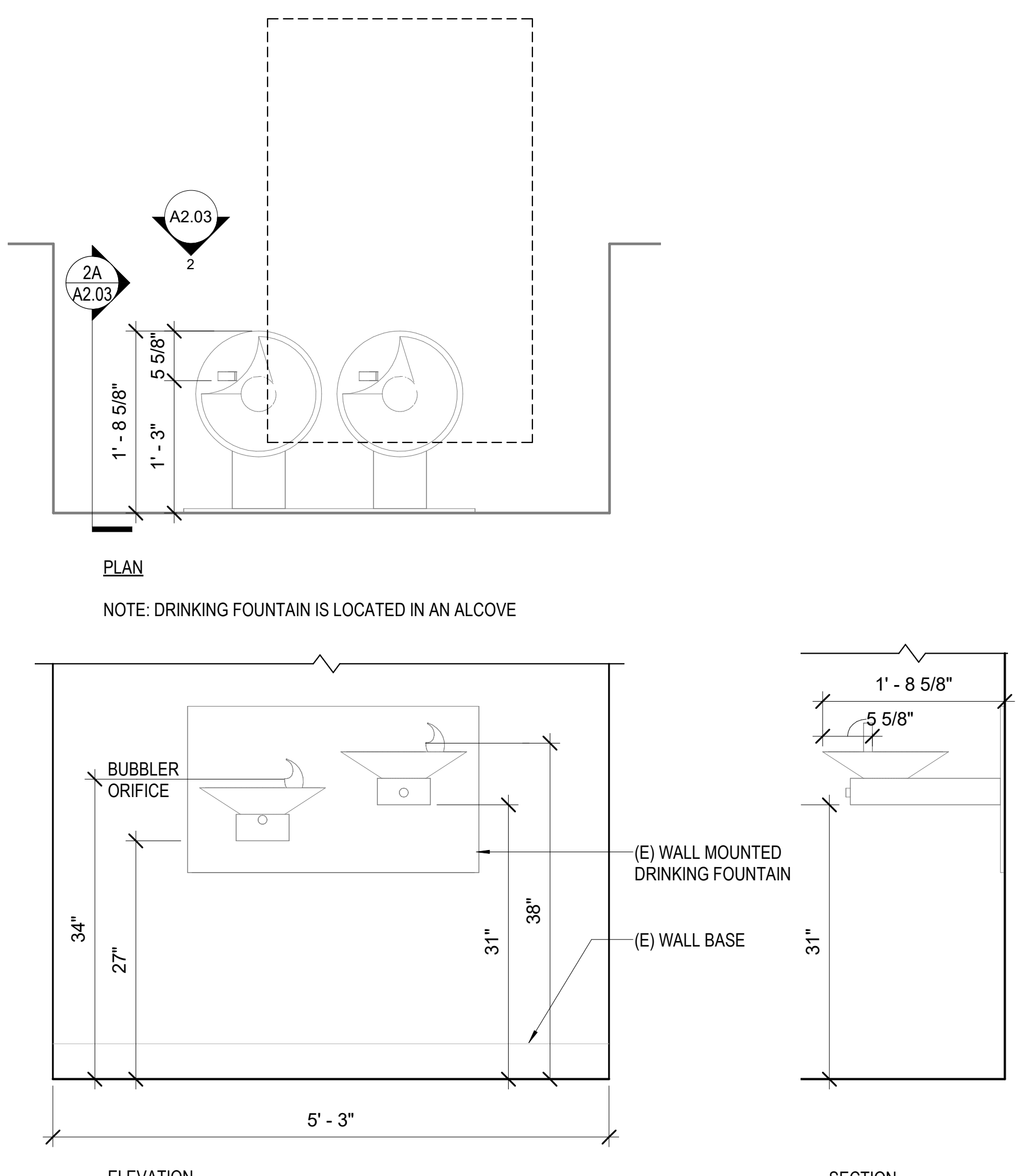
WAGNER RANCH ELEMENTARY SCHOOL SCOOTABLE PROJECT

350 CAMINO PABLO, ORINDA, CA 94563
JOB NO. 21010.03
DRAWN -
CHECKED -
JOB CAPTAIN -

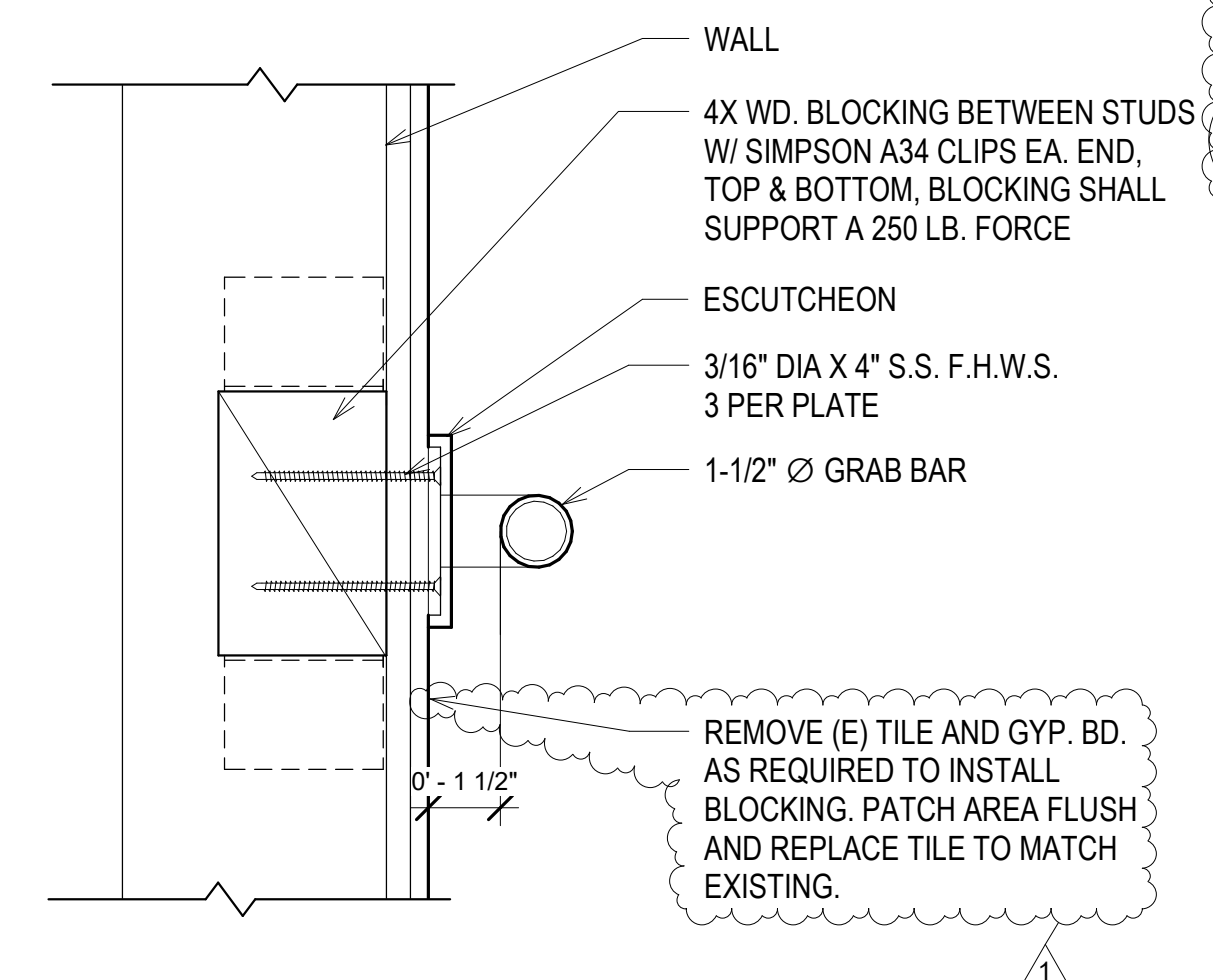
ISSUE

DATE	DESCRIPTION
05.04.23	DSA SUBMITTAL
05.08.23	DSA BACKCHECK
1 04.16.24	CCD 01

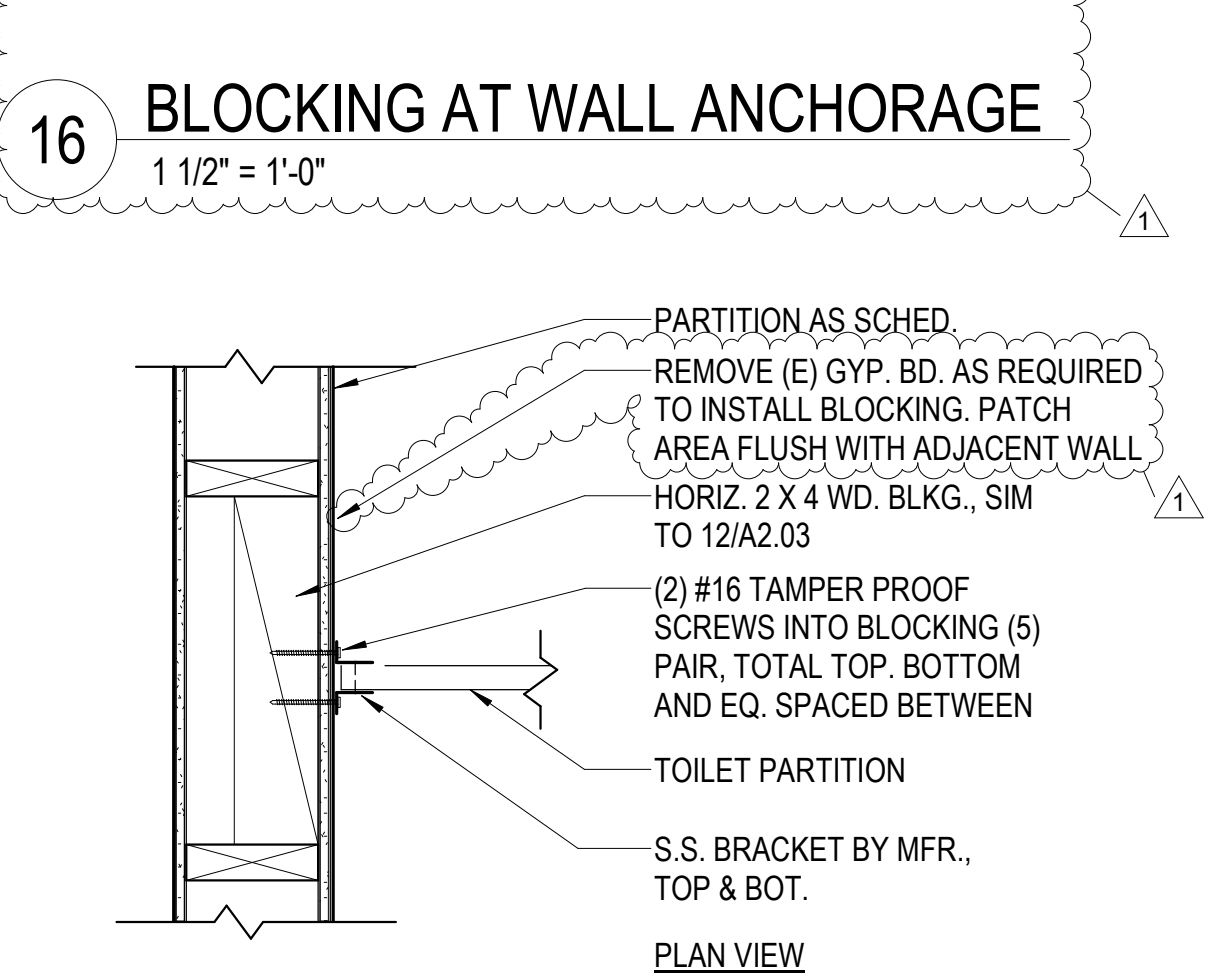
DRAWING TITLE
SITE DETAILS
Addendum 01



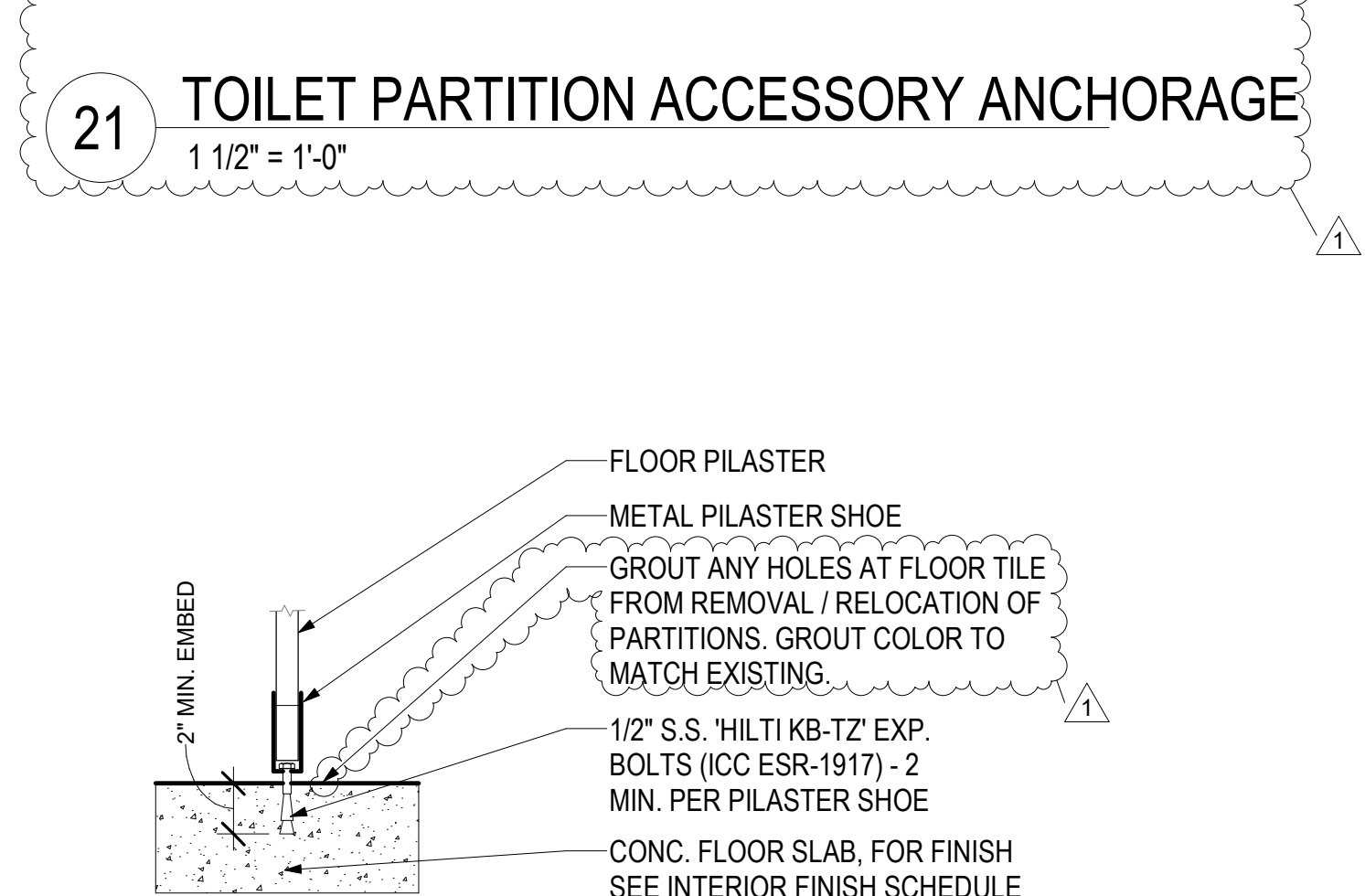
2 (E) ACCESSIBLE DRINKING FOUNTAIN
1" = 1'-0"



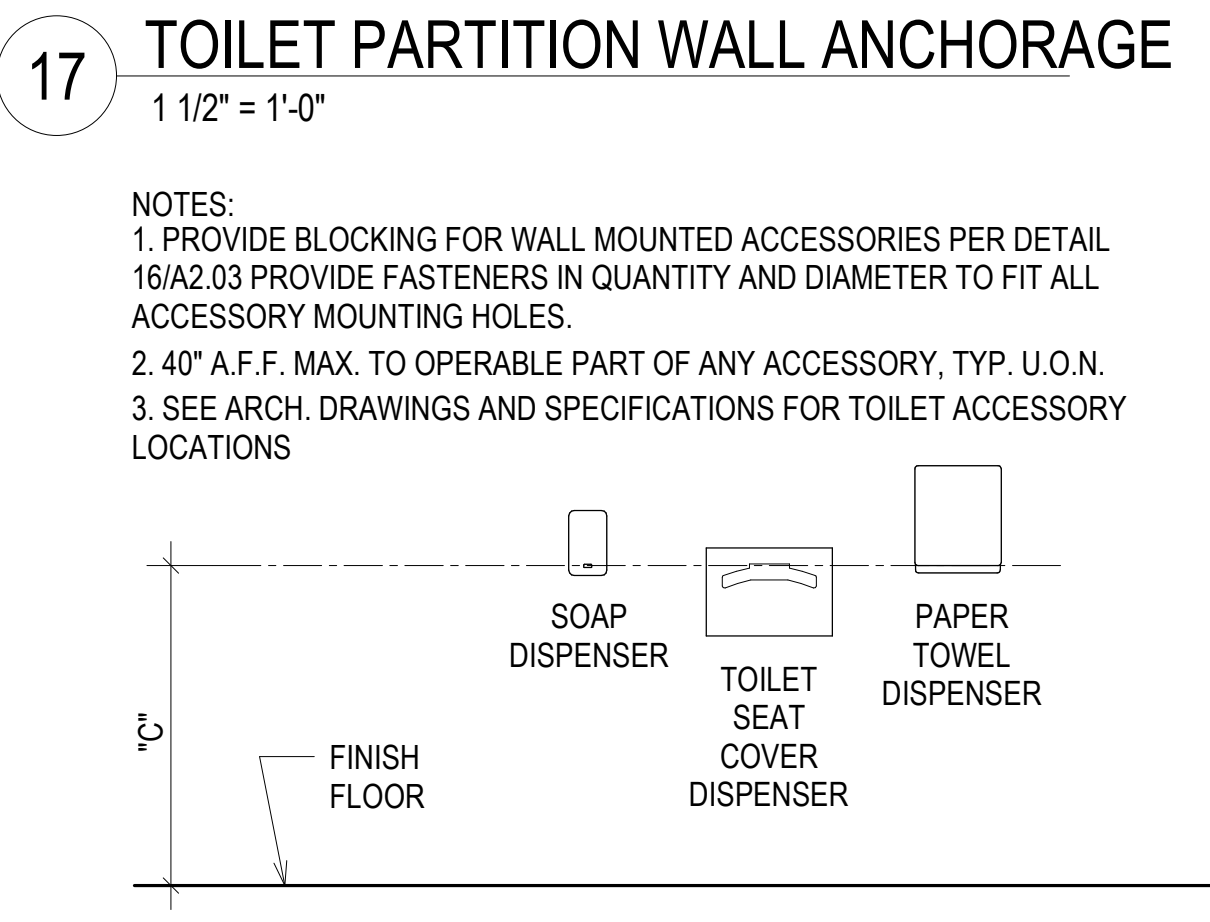
12 GRAB BAR ATTACHMENT
3" = 1'-0"



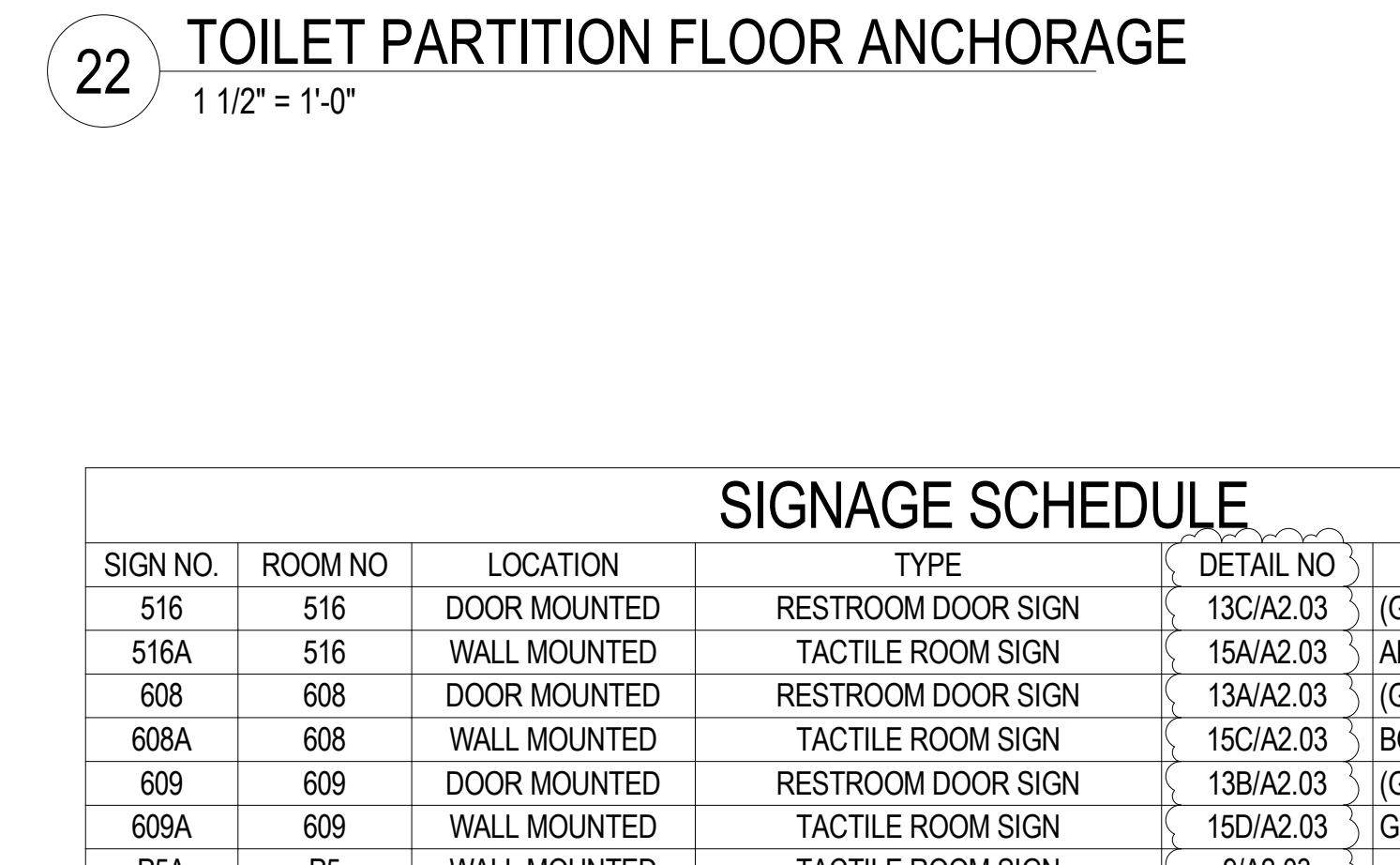
16 BLOCKING AT WALL ANCHORAGE
1 1/2" = 1'-0"



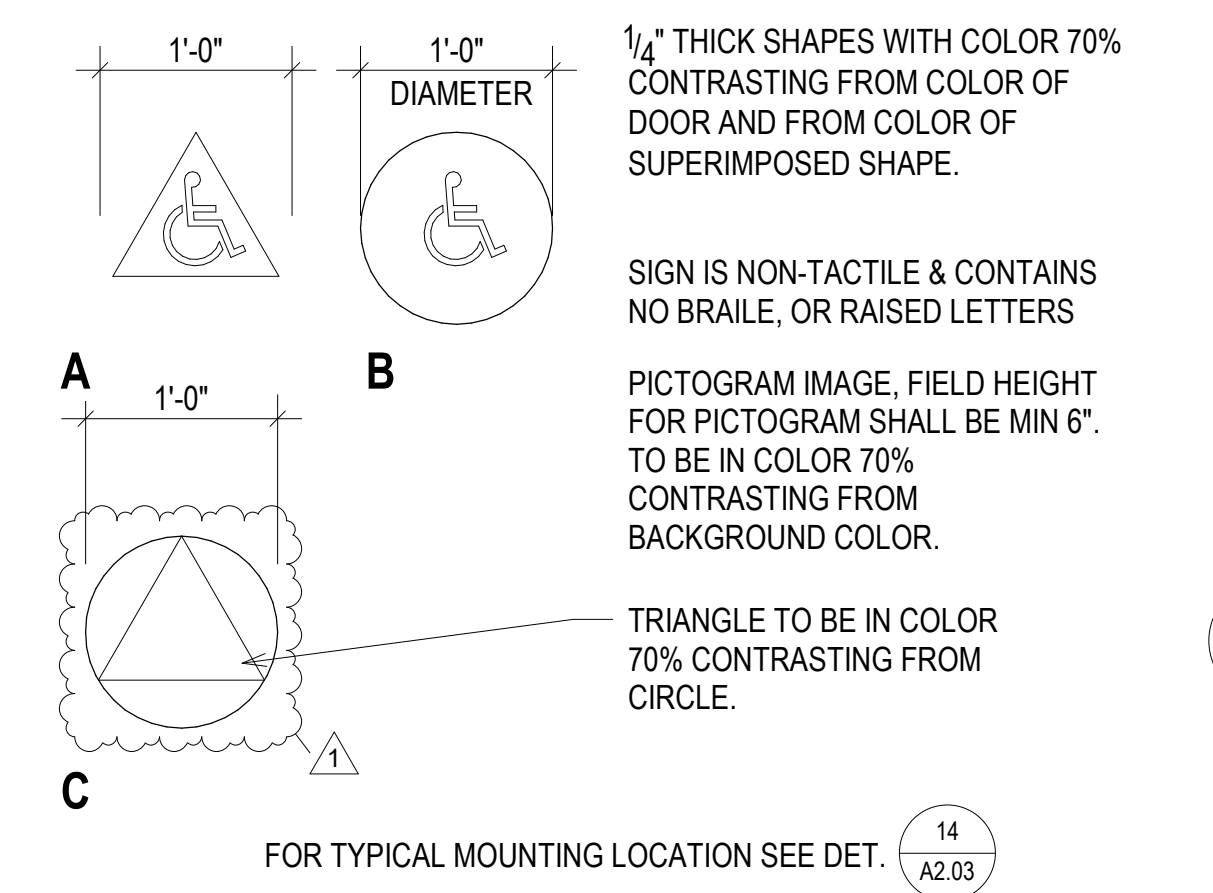
21 TOILET PARTITION ACCESSORY ANCHORAGE
1 1/2" = 1'-0"



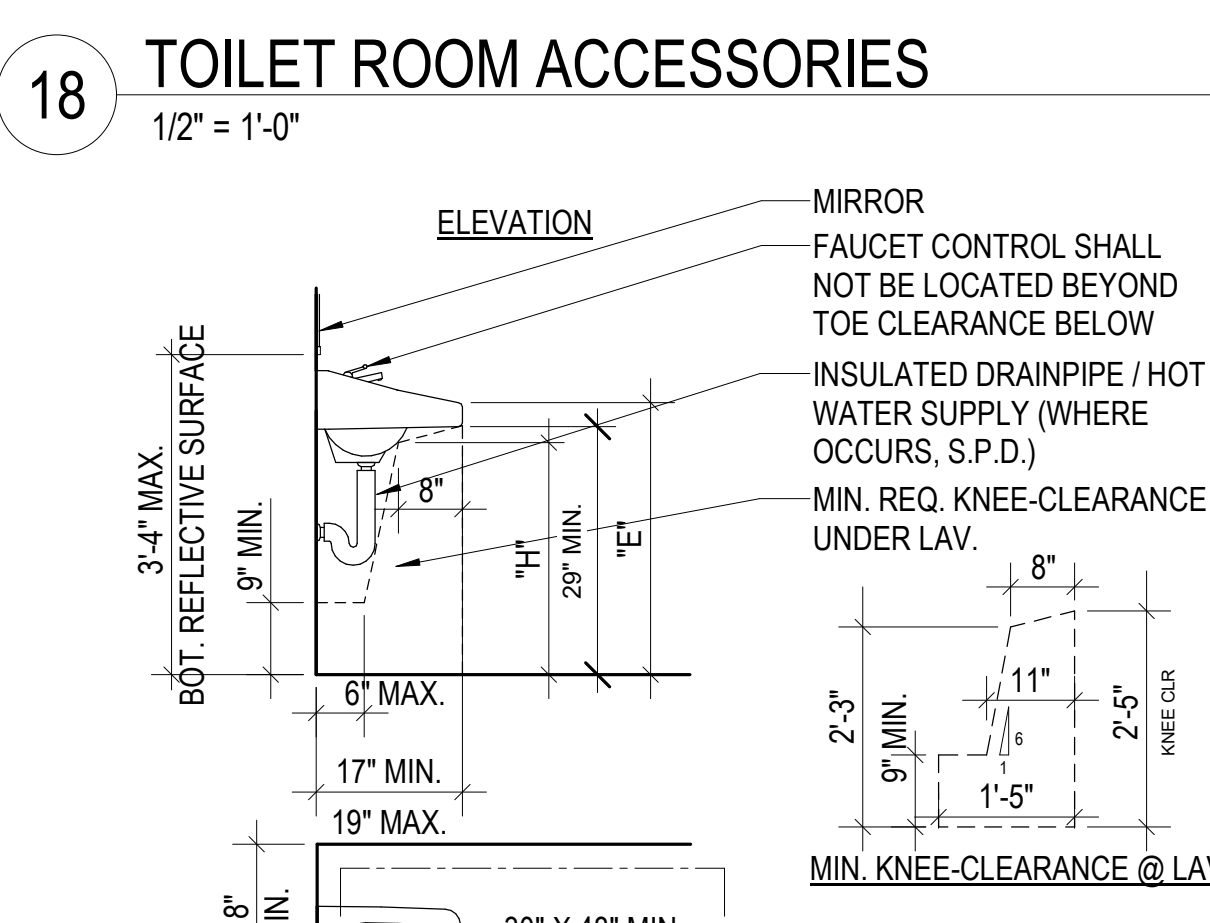
17 TOILET PARTITION WALL ANCHORAGE
1 1/2" = 1'-0"



22 TOILET PARTITION FLOOR ANCHORAGE
1 1/2" = 1'-0"



13 RESTROOM DOOR SIGN (RDS - X)
1" = 1'-0"



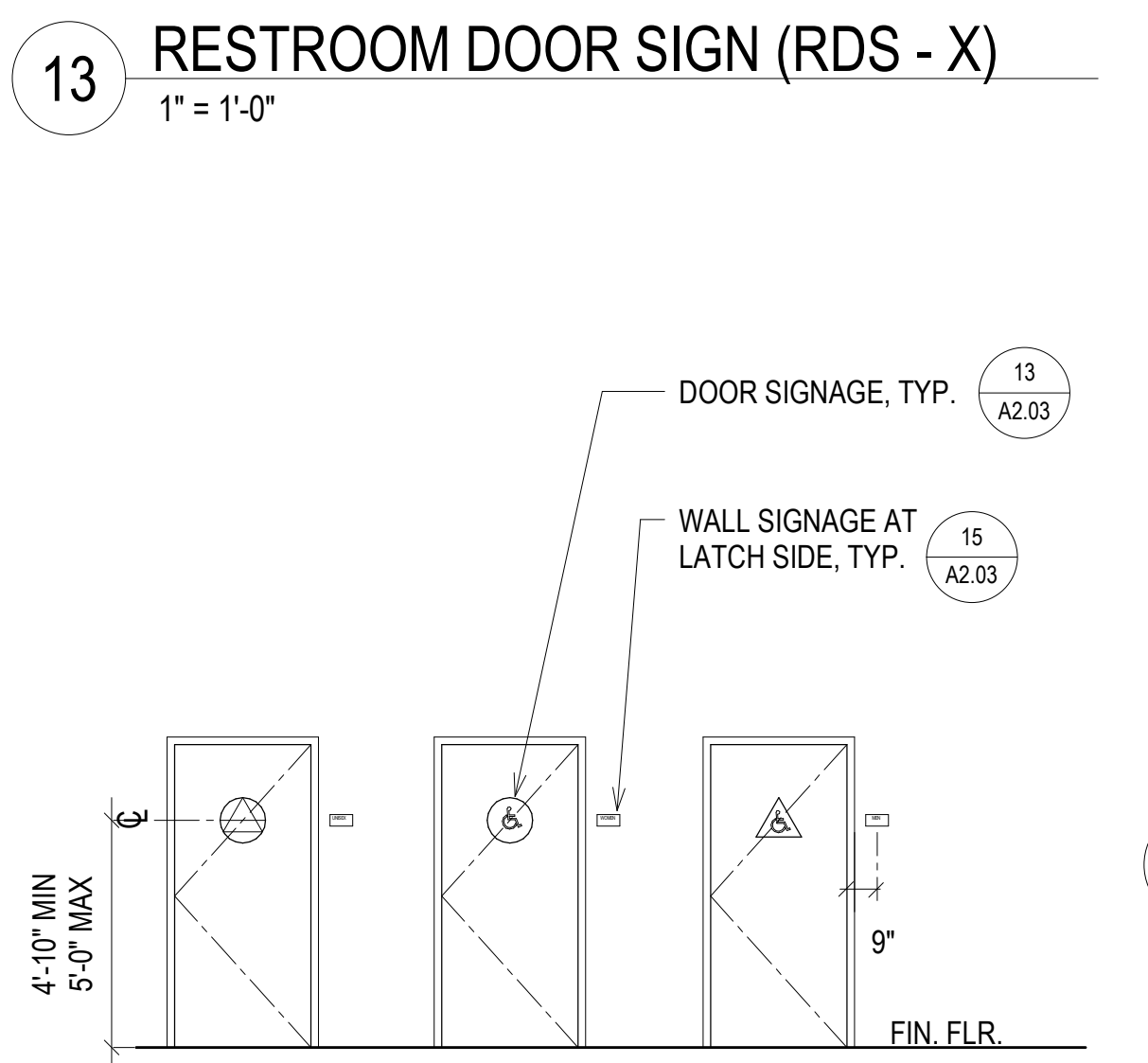
18 TOILET ROOM ACCESSORIES
1/2" = 1'-0"

SIGNAGE SCHEDULE					
SIGN NO.	ROOM NO.	LOCATION	TYPE	DETAIL NO.	(SIGNAGE TYPE) OR SIGN TEXT
516	516	DOOR MOUNTED	RESTROOM DOOR SIGN	13C/A2.03	(GEOMETRIC SYMBOL C)
516A	516	WALL MOUNTED	TACTILE ROOM SIGN	15A/A2.03	ALL GENDER STAFF RESTROOM
608	608	DOOR MOUNTED	RESTROOM DOOR SIGN	13A/A2.03	(GEOMETRIC SYMBOL A)
608A	608	WALL MOUNTED	TACTILE ROOM SIGN	15C/A2.03	BOYS RESTROOM
609	609	DOOR MOUNTED	RESTROOM DOOR SIGN	13B/A2.03	(GEOMETRIC SYMBOL B)
609A	609	WALL MOUNTED	TACTILE ROOM SIGN	15D/A2.03	GIRLS RESTROOM
P5A	P5	WALL MOUNTED	TACTILE ROOM SIGN	9/A2.03	
P5B	P5	WALL MOUNTED	ASSISTIVE LISTENING DEVICE	10/A2.03	

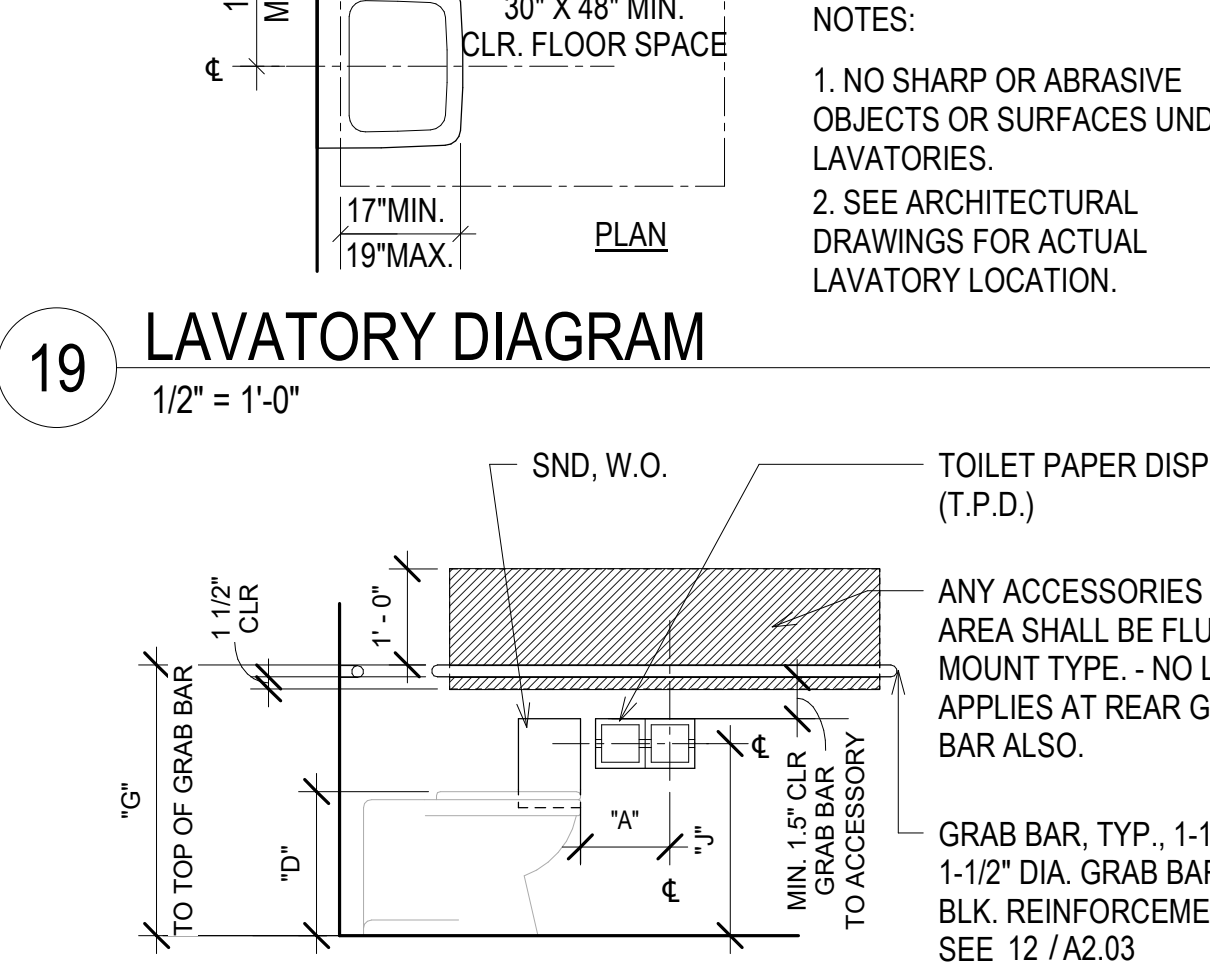
RESTROOM FIXTURES/ACCESSORIES ALTERNATE DIMENSIONS			
2022 CBC Reference: T, Table, S, Section, F, Figure			
	ADULT	AGES 9-12	2022 CBC REFERENCE
A	FURTHEST T.P. DISPENSER IN FRONT OF W.C.	7" - 9" TO CENTERLINE	S 11B-604.7
B	TOILET OFFSET	17" - 18"	T 11B-604.9 S 11B-604.2
C	ACCESSORY HEIGHT	40" MAX.	
D	TOILET SEAT HEIGHT	17" - 19"	T 11B-604.9 S 11B-604.4
E	LAVSINK RIM HEIGHT	34" MAX.	T 11B-606.2 S 11B-606.3
F	URINAL HEIGHT	17" MAX.	S 11B-605.2
G	TOP OF GRAB BAR GRIPPING SURFACE	33" - 36"	T 11B-604.9 S 11B-604.4
H	LAVSINK KNEE CLEARANCE	27" MIN. (29" MIN. AT APRON OF LAVATORY)	S 11B-606.2 F 11B-306.3
J	T.P. DISPENSER OUTLET (A.F.F. TO CENTERLINE OF OUTLET OR ROLL)	19" MIN.	T 11B-604.9 S 11B-604.7
	URINAL PROJECTION	13 1/2" MIN.	S 11B-605.2
	URINAL FLUSH CONTROL HEIGHT	44" MAX.	S 11B-605.4
	HIGH D.F. SPOUT HEIGHT	38" - 43"	S 11B-602.7
	LOW D.F. APPROACH, SPOUT HEIGHT AND SPOUT LOCATION FROM FRONT EDGE OF THE UNIT INCLUDING BUMPERS	FRONT APPROACH PER 11B-306, 36" MAX. A.F.F. & 5" MAX. FROM FRONT EDGE OF THE UNIT	PARALLEL APPROACH IS PERMITTED IF SPOUT IS 30" MAX. A.F.F. & 3 1/2" MAX FROM FRONT EDGE OF THE UNIT
	D.F. OPERABLE PARTS	6" MAX. FROM FRONT EDGE OF THE UNIT	S 11B-602.3
	CANTILEVER D.F. PROJECTION	18" - 19"	S 11B-602.8
	TOE CLEARANCE AT TOILET PARTITION	9" MIN.	S 11B-604.8.1.4
	SHELF HEIGHT	40" - 48"	S 11B-604.8.3
	MIRROR HEIGHT (BOTTOM EDGE OF REFLECTING SURFACE)	40" MAX. (ABOVE LAVATORY OR COUNTERTOP) 35" MAX (NOT ABOVE LAVATORY OR COUNTERTOP)	S 11B-603.3
	MIRROR HEIGHT (BOTTOM EDGE OF REFLECTING SURFACE) IN DRESSING, FITTING & LOCKERROOMS	20" MAX	S 11B-803.6
	COAT HOOK HEIGHT	46"	T 11B-308.4

NOTE: ALL HEIGHT DIMENSIONS ARE A.F.F. (OR A.F.G. FOR EXTERIOR). ALL HORIZONTAL DIMENSIONS ARE TO FACE-OF-FINISH
* AT SLOPING FLOORS, DIM. IS AT FACE OF FIXTURE

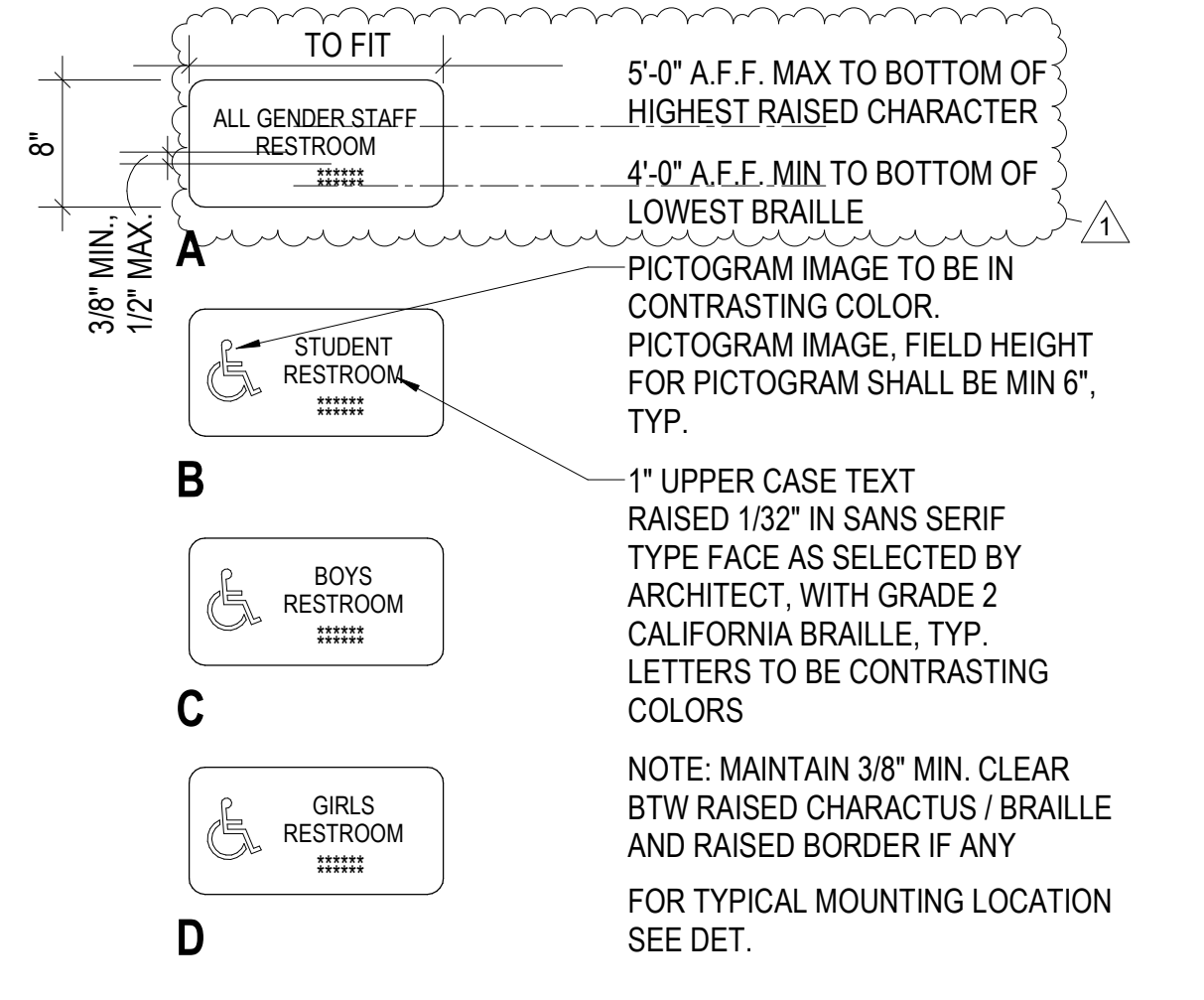
25 TOILET ROOM DIMENSIONS
1/2" = 1'-0"



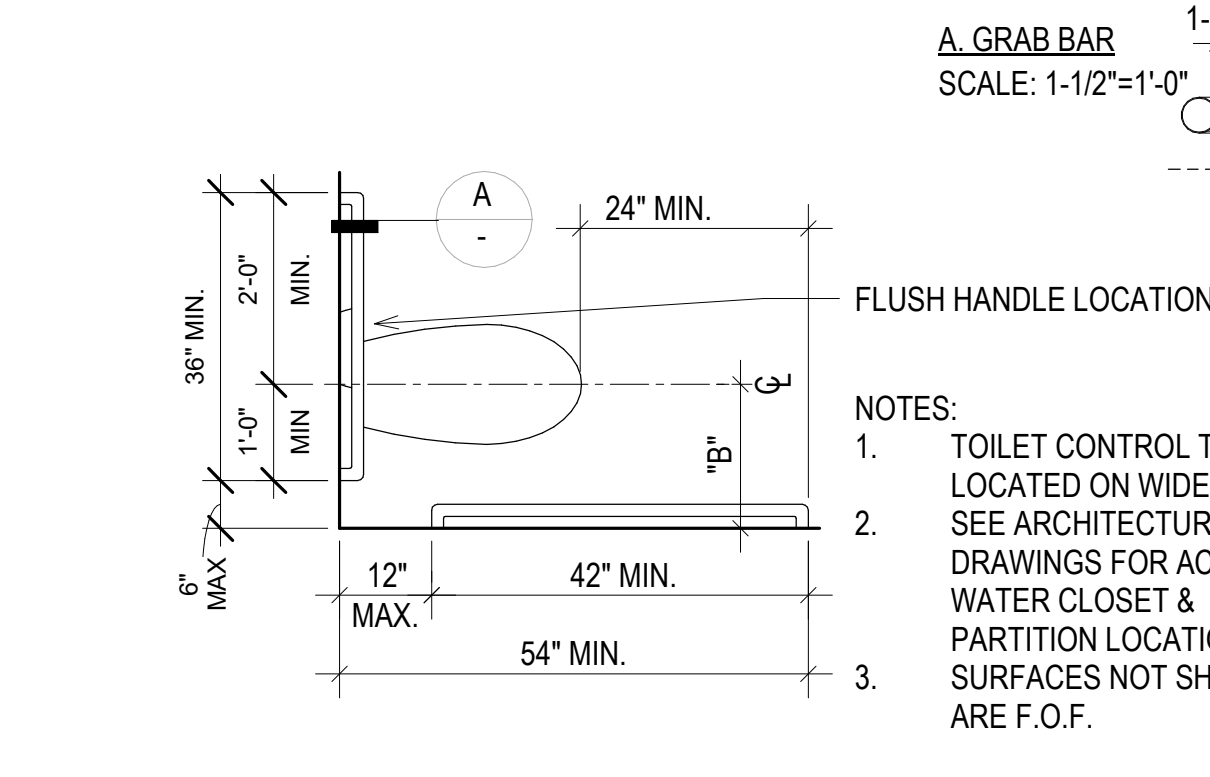
14 RESTROOM SIGN MOUNTING
1/4" = 1'-0"



19 LAVATORY DIAGRAM
1/2" = 1'-0"



15 RESTROOM WALL SIGN (RWS - X)
1" = 1'-0"

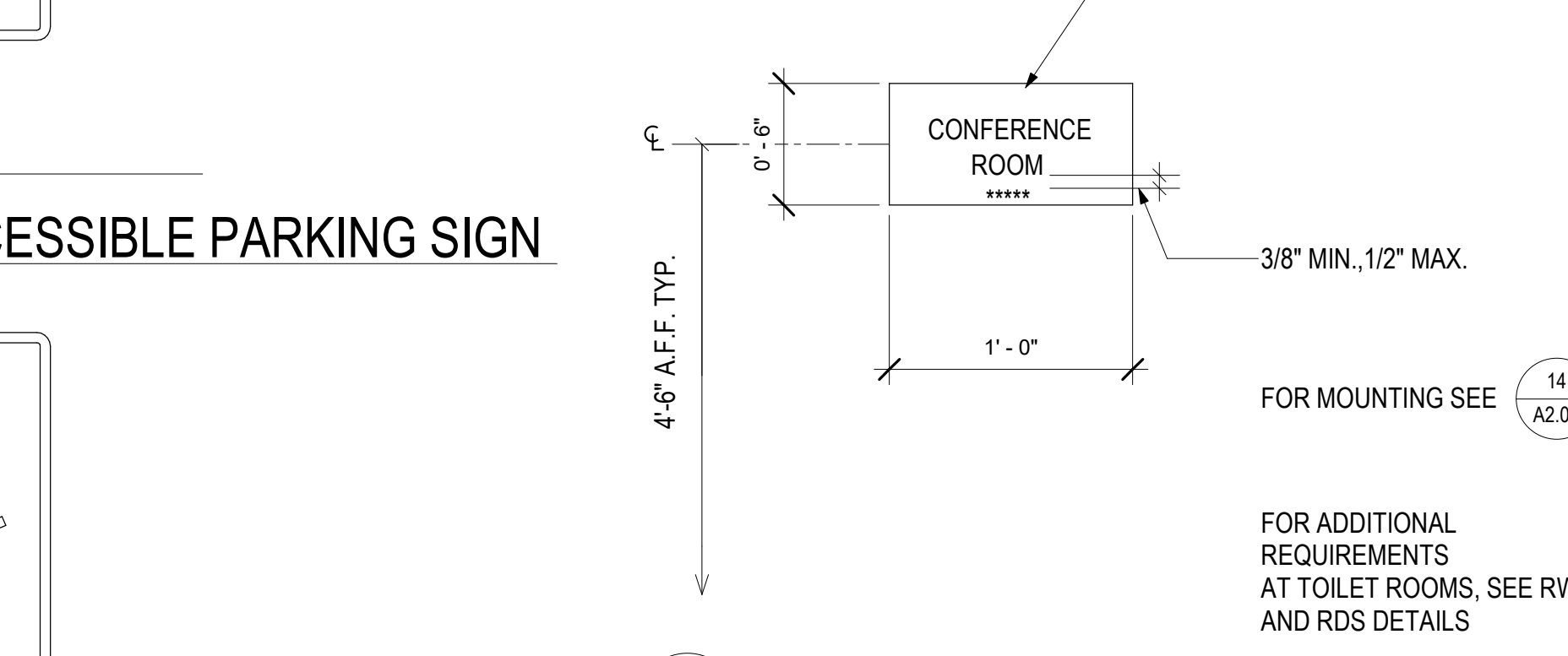


20 WATER CLOSET/GRAB BAR DIAGRAM
1/2" = 1'-0"

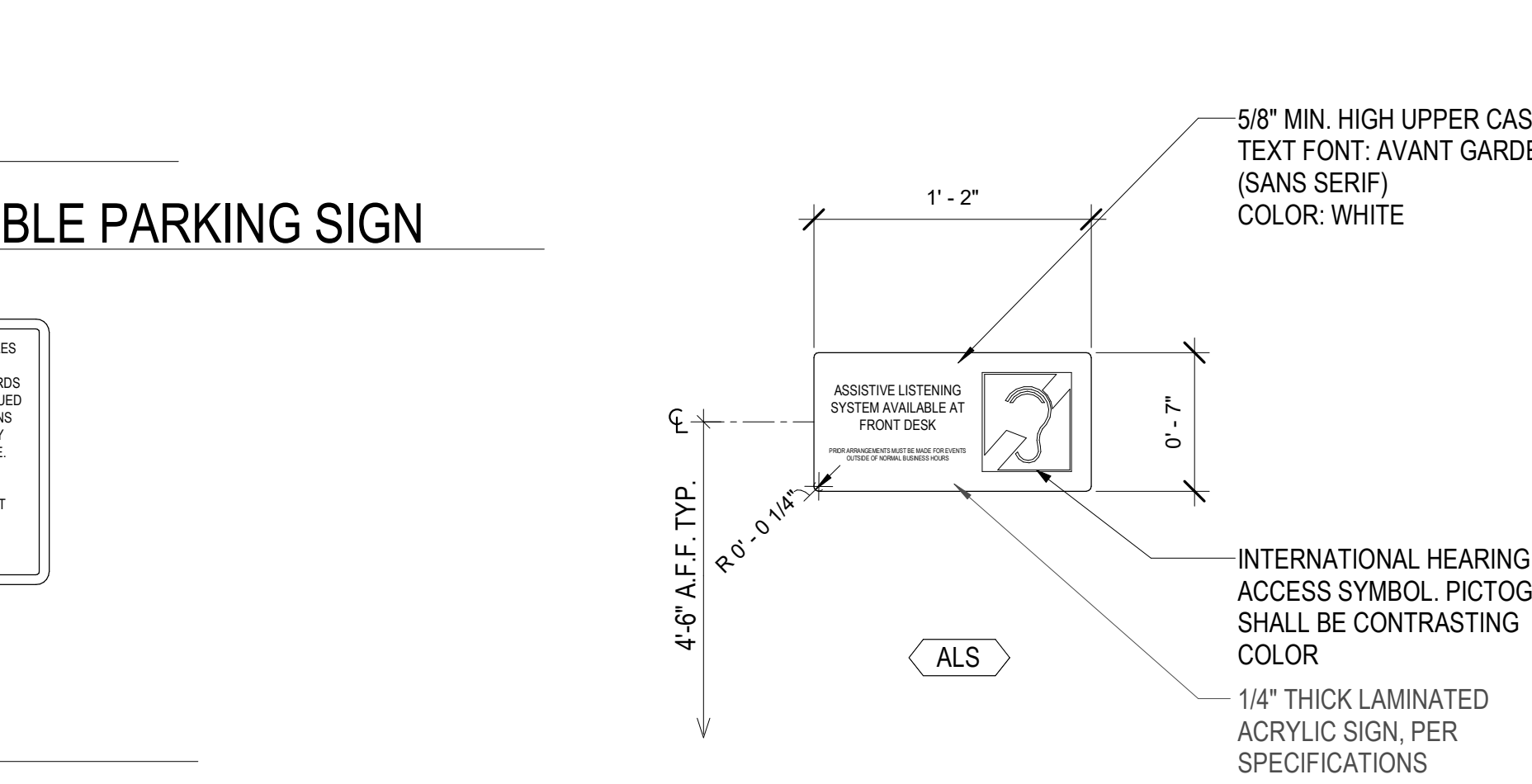
15 RESTROOM WALL SIGN (RWS - X)
1" = 1'-0"



3 (E) VAN ACCESSIBLE PARKING SIGN
1" = 1'-0"



9 ROOM IDENTIFICATION SIGN
1 1/2" = 1'-0"



10 ASSISTIVE LISTENING SIGN
1 1/2" = 1'-0"

15 RESTROOM WALL SIGN (RWS - X)
1" = 1'-0"

20 WATER CLOSET/GRAB BAR DIAGRAM
1/2" = 1'-0"

25 TOILET ROOM DIMENSIONS
1/2" = 1'-0"



DATE	DESCRIPTION
05.04.23	DSA SUBMITTAL
05.08.23	DSA BACKCHECK
1 04.16.24	CCD 01

SECTION 10 21 13

TOILET COMPARTMENTS

PART 1 GENERAL

1.1 SECTION INCLUDES

- A. Solid plastic toilet compartments including the following: (Hiny Hiders)
 - 1. Floor mounted overhead-braced toilet compartments.

1.2 RELATED SECTIONS

- A. Section 05 50 00 - Metal Fabrications.
- B. Section 06 10 00 - Rough Carpentry.

1.3 REFERENCES

- A. ASTM A 666 - Standard Specification for Stainless and Heat-Resisting Chromium-Nickel Steel Plate, Sheet, and Strip.
- B. ASTM B 221 - Standard Specification for Aluminum and Aluminum-Alloy Extruded Bars, Rods, Wire, Profiles, and Tubes.
- C. National Fire Protection Association (NFPA) 286 - Standard Methods of Fire Tests for Evaluating Contribution of Wall and Ceiling Interior Finish to Room Fire Growth.
- D. ASTM E 84 - Standard Test Method for Surface Burning Characteristics of Building Materials.
- E. United States EPA (Environmental Protection Agency) Registration - Bactericidal Surfaces Registered with the U.S. EPA to Legally Make Claims that these Materials Kill Infectious Bacteria.

1.4 SUBMITTALS

- A. Submit under provisions of Section 01 30 00 - Administrative Requirements.
- B. Product Data: Manufacturer's data sheets on each product to be used, including:
 - 1. Preparation instructions and recommendations.
 - 2. Storage and handling requirements and recommendations.
 - 3. Installation methods.
- C. Shop Drawings: Provide layout drawings and installation details with location and type of hardware required.
- D. Verification Samples: For each finish product specified, two samples representing actual product, color, and patterns.
- E. Sustainable Design Submittals:

TOILET PARTITIONS 10 21 13 - 1

1. Recycled Content: Certify percentages of post-consumer and pre-consumer recycled content.
2. Regional Materials: Certify distance between manufacturer and Project.

1.5 QUALITY ASSURANCE

- A. Manufacturer Qualifications: A company regularly engaged in manufacture of products specified in this section, and whose products have been in satisfactory use under similar service conditions for not less than 5 years.
- B. Installer Qualifications: A company regularly engaged in the installation of products specified in this Section, with a minimum of 5 years' experience.
- C. Materials: Doors, panels and pilasters, constructed from high density polyethylene (HDPE) resins. Partitions to be fabricated from polymer resins compounded under high pressure, forming a single component which is waterproof, nonabsorbent and has a self-lubricating surface that resists marks from pens, pencils, markers and other writing instruments. Cover all plastic components with a protective plastic masking.
- D. Performance Requirements:
 1. Fire Resistance: Partition materials shall comply with the following requirements, when tested in accordance with ASTM E 84:
 - a. Class A flame spread/smoke developed rating.
 - b. Class B flame spread/smoke developed rating.
 2. Material Fire Ratings:
 - a. National Fire Protection Association (NFPA) 286: Pass.
 - b. International Code Council (ICC): Class B.
 3. Antimicrobial Touch Surfaces: Hardware touch surfaces shall be manufactured from substrates that are registered with the U.S. EPA to kill specific bacteria tested according to U.S. EPA protocols.

1.6 DELIVERY, STORAGE, AND HANDLING

- A. Store products in manufacturer's unopened packaging until ready for installation.

1.7 PROJECT CONDITIONS

- A. Maintain environmental conditions (temperature, humidity, and ventilation) within limits recommended by manufacturer for optimum results. Do not install products under environmental conditions outside the manufacturer's absolute limits.

1.8 WARRANTY

- A. Manufacturer guarantees its plastic against breakage, corrosion, and delamination under normal conditions for 25 years from the date of receipt by the customer. If materials are found to be defective during that period for the reasons listed above, the materials will be replaced free of charge. Labor not included in the warranty.

PART 2 PRODUCTS

2.1 MANUFACTURERS

- A. Acceptable Manufacturer: Scranton Products, which is located at: 801 E. Corey St.; Scranton, PA 18505; ASD Toll Free Tel: 800-445-5148; Fax: 855-376-6161; Email:[request info \(info@scrantonproducts.com\)](mailto:requestinfo@scrantonproducts.com); Web:<https://www.scrantonproducts.com>
 - 1. Fabricator: Santana Toilet Partitions.
 - 2. Fabricator: Comtec Toilet Partitions.
 - 3. Fabricator: Capitol Toilet Partitions.
- B. Substitutions: Not permitted.
- C. Requests for substitutions will be considered in accordance with the provisions of Section 01 60 00 - Product Requirements.

2.2 MATERIAL

- A. Plastic Panels: High density polyethylene (HDPE) suitable for exposed applications, waterproof, non-absorbent, and graffiti-resistant textured surface.
 - 1. Recycled Content; Post Industrial: 25 percent.
 - 2. Recycled Content; Post Industrial: 100 percent.
 - 3. Recycled Content; Post Consumer: 100 percent.
- B. Zinc Aluminum Magnesium and Copper Alloy (Zamac): ASTM B 86.
- C. Stainless Steel Castings: ASTM A167, Type 304.
- D. Aluminum: ASTM 6463-T5 alloy.

2.3 SOLID PLASTIC TOILET COMPARTMENTS

- A. Basis of Design: Hiny Hiders Toilet Partitions as manufactured by and supplied by Scranton Products.
 - 1. Style: Floor mounted overhead-braced toilet compartments.
- B. Doors, Panels, and Pilasters: 1 inch thick with all edges rounded to a radius. Mount doors and dividing panels based on height of specified system. Match existing installed partitions.
 - 1. Door and Panel Height: 66 inches (verify).
 - 2. Aluminum heat sink fastened to bottom edges.
 - 3. Panel Edge: Standard.
 - 4. Pilasters: 82 inches high and fastened to floor.
- C. Panel Color: Traditional series.
 - 1. Paisley - Orange Peel.

- D. Pilaster Shoes: 3 inches, 20-gauge stainless steel. Secured to pilasters with a stainless-steel tamper resistant Torx head sex bolt.
- E. Headrail: Heavy-duty extruded 6463-T5 alloy aluminum with anti-grip design. Finish to be clear anodized. Fastened to headrail brackets with stainless steel tamper resistant Torx head sex bolt and fastened at the top of the pilaster with stainless steel tamper resistant Torx head screws.
 - 1. Headrail Brackets: 20-gauge stainless steel with satin finish. Secured to the wall with stainless steel tamper resistant Torx head screws.
- F. Wall Brackets:
 - 1. Aluminum Brackets: Heavy-duty aluminum 6463-T5 alloy.
 - a. Brackets are fastened to pilasters with stainless steel tamper resistant Torx head screws and fastened to the panels with stainless steel tamper resistant Torx head sex bolts.
 - 2. Bracket Type: Stirrup double ear aluminum.
 - 3. Bracket Type: Stirrup single ear aluminum.
 - 4. Bracket Type: Continuous 68 inches aluminum.
- G. Door Hardware:
 - 1. Wrap-Around Hinges: 8 inches and fabricated from heavy-duty extruded aluminum. Hinges are through-bolted to pilasters and doors with stainless steel tamper resistant Torx head sex bolts. Hinges operate with field adjustable nylon cams. Cams can be field set in 30-, 60- or 9-degree increments.
 - 2. Door Strike/Keeper: Heavy-duty extruded aluminum 6436-T5 alloy with a bright dip anodized finish. Secured to pilasters with stainless steel tamper resistant Torx head sex bolts. The bumper shall be made of extruded black vinyl.
 - a. Style: 6 inches aluminum.
 - 3. Latch Mechanism: Aluminum Slide Bolt Latch and Housing: Heavy-duty extruded 6463-T5 alloy aluminum. Latch and housing to have a bright dip anodized finish. Slide bolt and button to have a black anodized finish.
 - 4. Equip outswing handicapped doors with second door pull and door stop.

PART 3 EXECUTION

3.1 EXAMINATION

- A. Do not begin installation until the substrates have been properly prepared.
- B. If substrate preparation is the responsibility of another installer, notify Architect of unsatisfactory preparation before proceeding.

3.2 PREPARATION

- A. Clean surfaces thoroughly prior to installation.

- B. Prepare surfaces using the methods recommended by the manufacturer for achieving the best result for the substrate under the project conditions.
- C. Examine areas to receive toilet partitions, screens, and shower compartments for correct height and spacing of anchorage/blocking and plumbing fixtures that affect installation of partitions. Report discrepancies to the architect.

3.3 INSTALLATION

- A. Install in accordance with manufacturer's instructions.
- B. Install partitions rigid, straight, plumb, and level manor, with plastic laid out as shown on shop drawings.
- C. Clearance at vertical edges of doors shall be uniform top to bottom and shall not exceed 3/8 inch.
- D. No evidence of cutting, drilling, and/or patching shall be visible on the finished work.
- E. Finished surfaces shall be cleaned after installation and be left free of imperfections.

3.4 PROTECTION

- A. Protect installed products until completion of project.
- B. Touch-up, repair or replace damaged products before Substantial Completion.

END OF SECTION



Base on 025, Fol.

ORINDA UNION SCHOOL DISTRICT

Pre-Bid Conference & Site Visit Sign-in Sheet

Date:

April 11, 2024 @ 9 a.m.

Project / Description:

Wagner Ranch Elementary School - Path of Travel Work

Name	Company	Phone	E-Mail Address	Sign In	Sign Out
Emin Pothongk	Tri Valley Excavating	925 305 5374	forstehtrivallyx.com		
Edraim Akrysh	JPB Designs	916 549 6259	art.jpbdesigns@gmail.com	8:50 AM	
Matt McKim	McKim Company	510-222-6690	Matt@mkim-company.com	8:57 AM	
Matthew Ramirez	Frontline General Engineering Construction Inc	510-954-0739	Estimating@FrontlineGEConstruction.com	9:00 AM	
Serg Salazar	Sarver M PC	650 288 8354	ssalazar@sarver.com	9:15am	
Any Fide	HKIT		A Fide @ HKIT.com	8:50 AM	
Stuart Watson	District	925 258 6203	stuart@district.k12.sq.us	0:55pm	
Vincent Sum	SWINERTON MC	415 320 3402	VINCENT.SUM@SWINERTON.COM	8:50 AM	
Happy Patel	Swinerton Management	714-333-5849	happy.patel@swinerton.com	8:45 AM	



SWINERTON MANAGEMENT & CONSULTING